



**AAMA 507-07 THERMAL PERFORMANCE REPORT**

**Rendered to:**

**TUBELITE, INC.**

**SERIES/MODEL: Standard 2" Medium Stile Single Door**

**TYPE: Swinging Door - Double**

**Report No: B3772.02-116-45**  
**Report Date: 10/26/11**

## AAMA 507-07 THERMAL PERFORMANCE REPORT

Rendered to:

TUBELITE, INC.  
4878 Mackinaw Trail  
Reed City, Michigan 49677

Report No: B3772.02-116-45  
Report Date: 10/26/11  
Simulation Date: 10/26/11

### Project Summary:

Architectural Testing, Inc. was contracted by Tubelite, Inc. to provide U-Factor and Solar Heat Gain Coefficient thermal performance ratings on the Standard 2" Medium Stile Single Door Swinging Door - Double. The thermal performance ratings were determined in accordance with AAMA 507-07, Standard Practice for Determining the Thermal Performance Characteristics of Fenestration Systems Installed in Commercial Building.

### Reference Documents:

*AAMA 507-07, Standard Practice for Determining the Thermal Performance Characteristics of Fenestration Systems Installed in Commercial Buildings*

*NFRC 100-2010, Procedure for Determining Fenestration Product U-Factors*

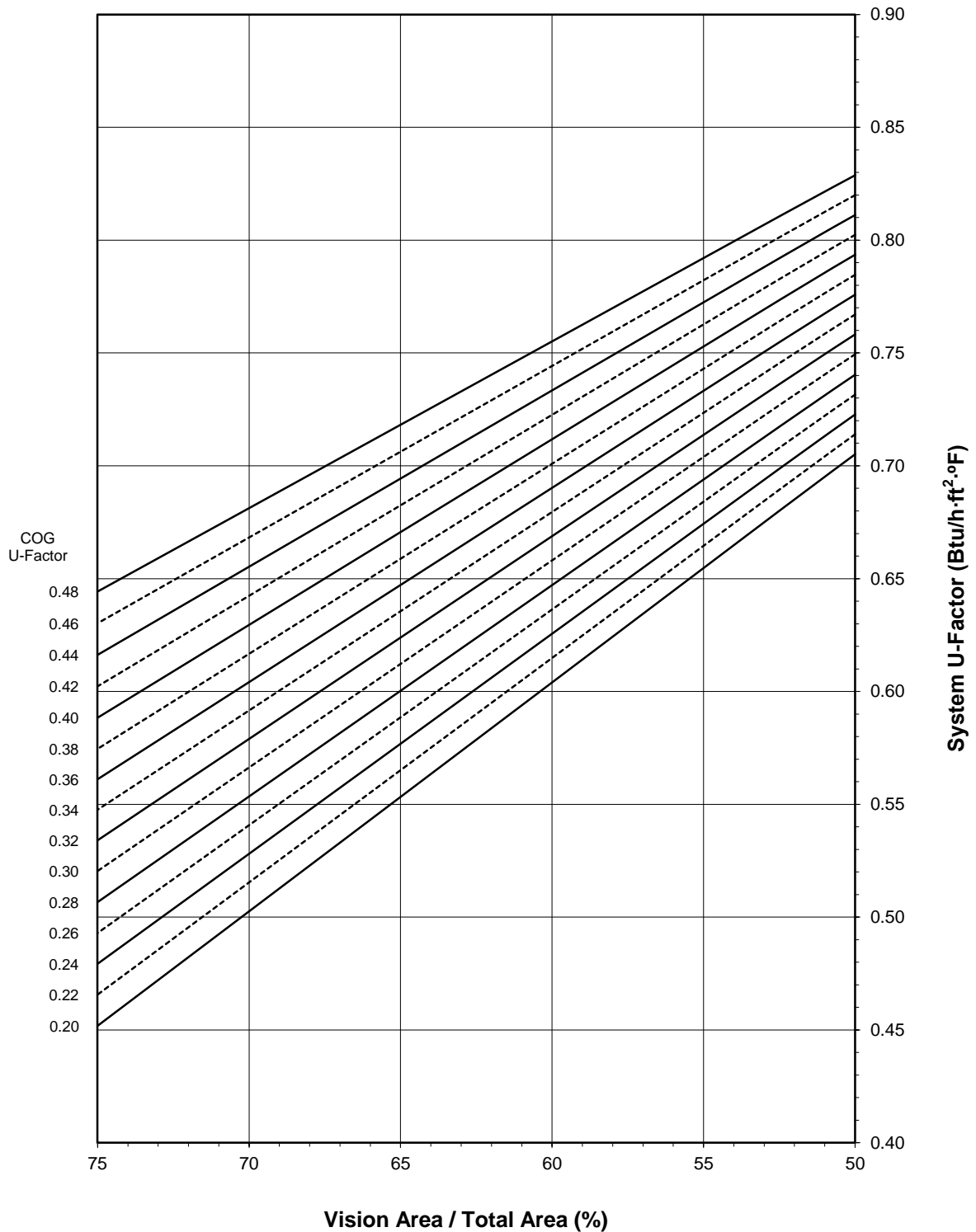
*NFRC 200-2010, Procedure for Determining Fenestration Product Solar Heat Gain Coefficient and Visible Transmittance at Normal Incidence*

### Simulation Specimen Description:

<b>Series/Model:</b>	Standard 2" Medium Stile Single Door
<b>Product Groupings:</b>	2" Medium w/o sweep grouped with 2" Medium w/ sweep.
<b>Type:</b>	Swinging Door - Double
<b>Frame Material:</b>	Aluminum Framing System
<b>Material Finish:</b>	Painted Aluminum
<b>Specimen Size:</b>	1920mm wide by 2090mm high (75-1/2" by 82-3/8")
<b>Configuration:</b>	Two vision lites separated by one intermediate vertical
<b>Drawing Reference:</b>	Tubelite Standard Doors - 2" Frame Details

**Tubelite, Inc.**  
**Standard 2" Medium Stile Single Door - Swinging Door - Double**

**System U-Factor vs. Percentage of Vision Area**



Note: 1 inch Overall - Dual Glazed Glass (0.48-0.20 COG) with Aluminum Spacer



**Tubelite, Inc.**  
**Standard 2" Medium Stile Single Door - Swinging Door - Double**

**Size Specific U-Factor Matrix\***

Glazing Option	Center of Glass U-Factor	Overall U-Factor
1	0.48	0.81
2	0.46	0.80
3	0.44	0.79
4	0.42	0.78
5	0.40	0.77
6	0.38	0.76
7	0.36	0.76
8	0.34	0.75
9	0.32	0.74
10	0.30	0.73
11	0.28	0.72
12	0.26	0.71
13	0.24	0.70
14	0.22	0.69
15	0.20	0.68

Note: 1 inch Overall - Dual Glazed Glass (0.48-0.20 COG) with Aluminum Spacer

**Size Specific SHGC Matrix\***

Center of Glass SHGC	Overall SHGC
0.75	0.43
0.70	0.41
0.65	0.38
0.60	0.36
0.55	0.33
0.50	0.30
0.45	0.28
0.40	0.25
0.35	0.22
0.30	0.20
0.25	0.17
0.20	0.15
0.15	0.12
0.10	0.09
0.05	0.07

**Size Specific VT Matrix\***

Center of Glass VT	Overall VT
0.75	0.39
0.70	0.37
0.65	0.34
0.60	0.31
0.55	0.29
0.50	0.26
0.45	0.24
0.40	0.21
0.35	0.18
0.30	0.16
0.25	0.13
0.20	0.10
0.15	0.08
0.10	0.05
0.05	0.03

\*Size Specific U-Factor, SHGC, and VT Matrices are based on the standard Swinging Door - Double specimen size of 1920mm wide by 2090mm high (75-1/2" by 82-3/8"). This represents 52.5% Vision Area / Total Area.

Vision Area Data

Option No.	COG U-Factor	COG Temperature	Cross Section	Frame Height	Frame U-Factor	Edge U-Factor	Total Product U-Factor		
							50% Vision Area	NFRC 100-2010	75% Vision Area
							71.24" by 77.55"	75.59" by 82.28"	153.93" by 167.56"
1	0.48	43.7	Ext. Head	7.2145	1.2181	0.5754	0.8288	0.8108	0.6443
			Int. Head	7.2145	1.2181	0.5754			
			Ext. Jamb	8.1557	1.1768	0.5786			
			Int. Jamb	8.1557	1.1768	0.5786			
			Mtg. Rail	10.4191	1.0984	0.5818			
			Ext. Sill	8.2770	1.1346	0.5812			
			Int. Sill	8.2770	1.1346	0.5812			
2	0.46	44.8	Ext. Head	7.2145	1.2181	0.5618	0.8200	0.8015	0.6303
			Int. Head	7.2145	1.2181	0.5618			
			Ext. Jamb	8.1557	1.1767	0.5650			
			Int. Jamb	8.1557	1.1767	0.5650			
			Mtg. Rail	10.4191	1.0982	0.5682			
			Ext. Sill	8.2770	1.1344	0.5675			
			Int. Sill	8.2770	1.1344	0.5675			
3	0.44	45.8	Ext. Head	7.2145	1.2180	0.5483	0.8112	0.7922	0.6163
			Int. Head	7.2145	1.2180	0.5483			
			Ext. Jamb	8.1557	1.1767	0.5515			
			Int. Jamb	8.1557	1.1767	0.5515			
			Mtg. Rail	10.4191	1.0980	0.5546			
			Ext. Sill	8.2770	1.1343	0.5539			
			Int. Sill	8.2770	1.1343	0.5539			
4	0.42	46.8	Ext. Head	7.2145	1.2180	0.5349	0.8024	0.7830	0.6023
			Int. Head	7.2145	1.2180	0.5349			
			Ext. Jamb	8.1557	1.1766	0.5381			
			Int. Jamb	8.1557	1.1766	0.5381			
			Mtg. Rail	10.4191	1.0978	0.5412			
			Ext. Sill	8.2770	1.1342	0.5404			
			Int. Sill	8.2770	1.1342	0.5404			
5	0.40	47.9	Ext. Head	7.2145	1.2179	0.5216	0.7936	0.7737	0.5884
			Int. Head	7.2145	1.2179	0.5216			
			Ext. Jamb	8.1557	1.1765	0.5247			
			Int. Jamb	8.1557	1.1765	0.5247			
			Mtg. Rail	10.4191	1.0976	0.5278			
			Ext. Sill	8.2770	1.1341	0.5270			
			Int. Sill	8.2770	1.1341	0.5270			
6	0.38	48.9	Ext. Head	7.2145	1.2167	0.5083	0.7847	0.7643	0.5746
			Int. Head	7.2145	1.2167	0.5083			
			Ext. Jamb	8.1557	1.1765	0.5116			
			Int. Jamb	8.1557	1.1765	0.5116			
			Mtg. Rail	10.4191	1.0975	0.5146			
			Ext. Sill	8.2770	1.1340	0.5136			
			Int. Sill	8.2770	1.1340	0.5136			

Vision Area Data

Option No.	COG U-Factor	COG Temperature	Cross Section	Frame Height	Frame U-Factor	Edge U-Factor	Total Product U-Factor		
							50% Vision Area	NFRC 100-2010	75% Vision Area
							71.24" by 77.55"	75.59" by 82.28"	153.93" by 167.56"
7	0.36	50.0	Ext. Head	7.2145	1.2167	0.4951	0.7759	0.7550	0.5611
			Int. Head	7.2145	1.2167	0.4951			
			Ext. Jamb	8.1557	1.1765	0.4983			
			Int. Jamb	8.1557	1.1765	0.4983			
			Mtg. Rail	10.4191	1.0973	0.5013			
			Ext. Sill	8.2770	1.1338	0.5002			
			Int. Sill	8.2770	1.1338	0.5002			
8	0.34	51.0	Ext. Head	7.2145	1.2167	0.4821	0.7671	0.7457	0.5476
			Int. Head	7.2145	1.2167	0.4821			
			Ext. Jamb	8.1557	1.1764	0.4853			
			Int. Jamb	8.1557	1.1764	0.4853			
			Mtg. Rail	10.4191	1.0971	0.4882			
			Ext. Sill	8.2770	1.1337	0.4872			
			Int. Sill	8.2770	1.1337	0.4872			
9	0.32	52.0	Ext. Head	7.2145	1.2167	0.4689	0.7583	0.7364	0.5341
			Int. Head	7.2145	1.2167	0.4689			
			Ext. Jamb	8.1557	1.1764	0.4721			
			Int. Jamb	8.1557	1.1764	0.4721			
			Mtg. Rail	10.4191	1.0969	0.4750			
			Ext. Sill	8.2770	1.1336	0.4740			
			Int. Sill	8.2770	1.1336	0.4740			
10	0.30	53.1	Ext. Head	7.2145	1.2166	0.4560	0.7495	0.7271	0.5205
			Int. Head	7.2145	1.2166	0.4560			
			Ext. Jamb	8.1557	1.1763	0.4592			
			Int. Jamb	8.1557	1.1763	0.4592			
			Mtg. Rail	10.4191	1.0968	0.4621			
			Ext. Sill	8.2770	1.1335	0.4610			
			Int. Sill	8.2770	1.1335	0.4610			
11	0.28	54.2	Ext. Head	7.2145	1.2166	0.4430	0.7404	0.7176	0.5067
			Int. Head	7.2145	1.2166	0.4430			
			Ext. Jamb	8.1557	1.1763	0.4462			
			Int. Jamb	8.1557	1.1763	0.4462			
			Mtg. Rail	10.4191	1.0954	0.4474			
			Ext. Sill	8.2770	1.1334	0.4479			
			Int. Sill	8.2770	1.1334	0.4479			
12	0.26	55.2	Ext. Head	7.2145	1.2166	0.4301	0.7316	0.7083	0.4930
			Int. Head	7.2145	1.2166	0.4301			
			Ext. Jamb	8.1557	1.1763	0.4333			
			Int. Jamb	8.1557	1.1763	0.4333			
			Mtg. Rail	10.4191	1.0952	0.4344			
			Ext. Sill	8.2770	1.1333	0.4349			
			Int. Sill	8.2770	1.1333	0.4349			



Vision Area Data

Option No.	COG U-Factor	COG Temperature	Cross Section	Frame Height	Frame U-Factor	Edge U-Factor	Total Product U-Factor		
							50% Vision Area	NFRC 100-2010	75% Vision Area
							71.24" by 77.55"	75.59" by 82.28"	153.93" by 167.56"
13	0.24	56.3	Ext. Head	7.2145	1.2166	0.4173	0.7228	0.6990	0.4794
			Int. Head	7.2145	1.2166	0.4173			
			Ext. Jamb	8.1557	1.1763	0.4205			
			Int. Jamb	8.1557	1.1763	0.4205			
			Mtg. Rail	10.4191	1.0951	0.4215			
			Ext. Sill	8.2770	1.1332	0.4220			
			Int. Sill	8.2770	1.1332	0.4220			
14	0.22	57.3	Ext. Head	7.2145	1.2166	0.4046	0.7140	0.6897	0.4657
			Int. Head	7.2145	1.2166	0.4046			
			Ext. Jamb	8.1557	1.1762	0.4077			
			Int. Jamb	8.1557	1.1762	0.4077			
			Mtg. Rail	10.4191	1.0949	0.4087			
			Ext. Sill	8.2770	1.1331	0.4092			
			Int. Sill	8.2770	1.1331	0.4092			
15	0.20	58.4	Ext. Head	7.2145	1.2166	0.3917	0.7051	0.6804	0.4519
			Int. Head	7.2145	1.2166	0.3917			
			Ext. Jamb	8.1557	1.1762	0.3949			
			Int. Jamb	8.1557	1.1762	0.3949			
			Mtg. Rail	10.4191	1.0948	0.3958			
			Ext. Sill	8.2770	1.1331	0.3963			
			Int. Sill	8.2770	1.1331	0.3963			



Detailed drawings, datasheets, representative samples of test specimens, a copy of this report, or other pertinent project documentation will be retained by Architectural Testing, Inc. for a period of four years from the original test date. At the end of this retention period such materials shall be discarded without notice and the service life of this report by Architectural Testing will expire. Results obtained are simulated values and were secured by using the designated test methods. This report does not constitute certification of this product nor an opinion or endorsement by this laboratory. It is the exclusive property of the client named herein and relates only to the specimen(s) simulated. This report may not be reproduced, except in full, without the written approval of Architectural Testing, Inc.

For ARCHITECTURAL TESTING, INC.:

SIMULATED BY:

REVIEWED BY:

---

Eric Barilar  
Simulation Technician

---

Kevin S. Louder  
Project Engineer

EAB:EAB  
B3772.02-116-45

Attachments (pages): This report is complete only when all attachments listed are included.

Appendix A: Drawings and Bills of Material (23)

### Revision Log

<u>Rev. #</u>	<u>Date</u>	<u>Page(s)</u>	<u>Revision(s)</u>
.01R0	10/26/2011	All	Original Report Issue

All drawings and Bills of Material used in simulating this product are enclosed in this Appendix.

## STANDARD PAIR DOOR BOM -2" Frame

**ATI**

Report # B3772-116-45

Date 10/20/2011

Simulator *Eric Barilac*

### FRAME:

Description	QTY	Length	Part number	Material
Jamb 2" x 4 1/2"	2		E14144	
Header 2" x 4 1/2"	1		E14124	
Door stops	3		E4531	
Weather pile	30 ft		P1098A	vinyl
closure open back plate	2		E4543	

### DOOR:

Description	QTY	Narrow P/N	Medium P/N	Wide P/N	Material
Beveled Door Stiles	2	<del>E0055 - 2 1/8"</del>	E0086- 4"	<del>E0416 - 5"</del>	
Inactive Stile		<del>E0056 - 2 1/8"</del>	E0087 - 4"	<del>E0417 - 5"</del>	
Astragal Stile		<del>E1149 - 2 1/8"</del>	E1150 - 4"	<del>E1151 - 5"</del>	
Adjustable Astragal	1	E1152	E1152	E1152	
Stainless Steel Clip for Adj. Astragal	1	P1539	P1539	P1539	Stainless steel
Adj. Astragal Pile	2	P938	P938	P938	AL
Door Top Rail	1	<del>E0255- 2 1/8"</del>	E0054- 4"	<del>E0318 - 5"</del>	
Top Rail Lug	2	<del>P168</del>	P031	<del>P339</del>	AL
Door Botom Rail	1	<del>E0054- 4"</del>	E0419- 6 1/2"	<del>E0419- 6 1/2"</del>	
Bottom Rail Lug	2	<del>P031</del>	P341	<del>P341</del>	AL
Top Rail & Bottom Rail Tie Rods	2	<del>P020</del>	P020	<del>P020</del>	steel
Washer for Tie Rods	4	<del>P853</del>	P853	<del>P853</del>	AL
Hex nuts for Tie rods	4	<del>S071A</del>	S071A	<del>S071A</del>	steel
Exterior Glass Stop 1" glass	4	<del>E0927</del>	E0927	<del>E0927</del>	

Interior Glass Stop 1" glass	4	<del>E0928</del>	E0928	<del>E0928</del>	
Gasket	36 ft	<del>P0017</del>	P0017	<del>P0017</del>	vinyl
Adjustable Wedge Setting Blck	2	<del>P1911</del>	P1911	<del>P1911</del>	Polypropylene
Self Adhesive Setting Blck	3	<del>P1912</del>	P1912	<del>P1912</del>	EPDM
Threshold	1	<del>E0019</del>	E0019	<del>E0019</del>	
Threshold clip	2	<del>P679</del>	P679	<del>P679</del>	AL

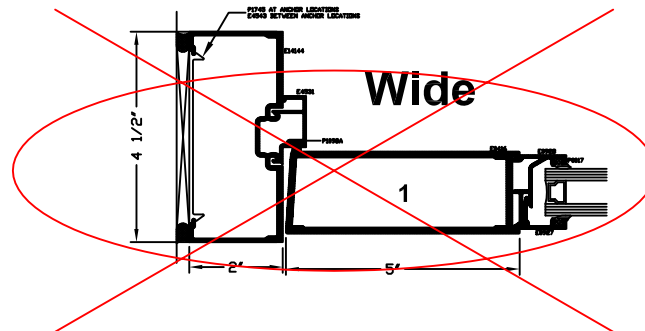
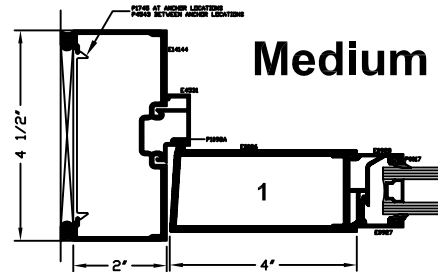
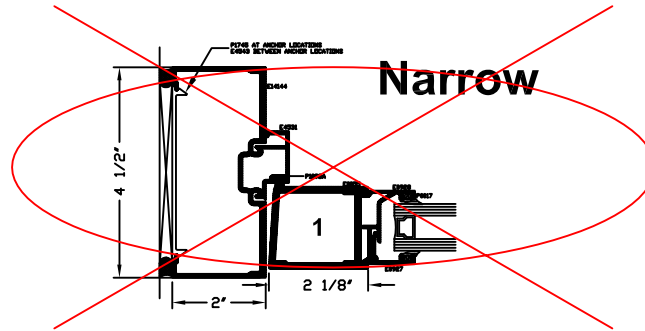
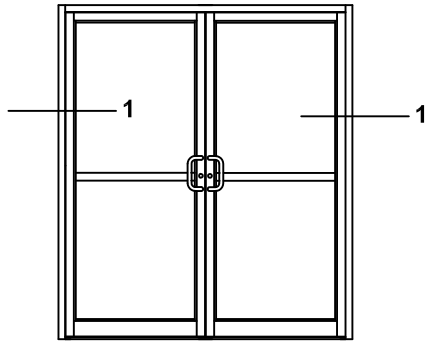
**MATERIAL:**

**E - All E part numbers are AL extrusions**

	<b>ATI</b>
<b>Report #</b>	<u>B3772-116-45</u>
<b>Date</b>	<u>10/20/2011</u>
<b>Simulator</b>	<u><i>Eric Bahille</i></u>

# Standard Doors - Jamb detail 2" Frame

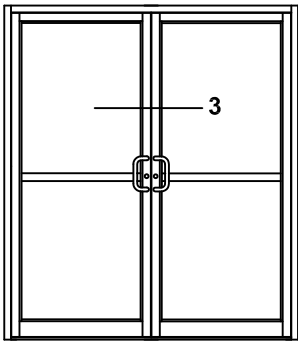
## Elevations & 1/4 Size Details



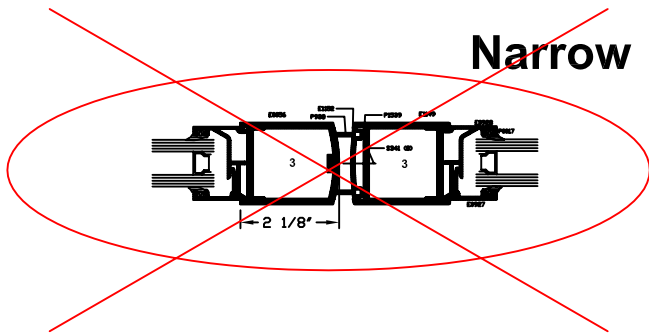
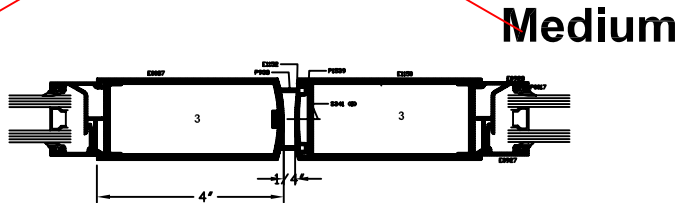
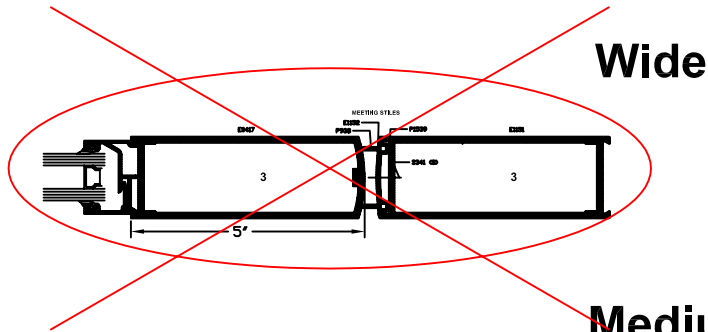
	ATI
Report #	B3772-116-45
Date	10/20/2011
Simulator	<i>Eric Bohlen</i>

\*SEALANT, ROD, & ANCHORS NOT BY TUBELITE

# Standard Doors - Pairs 2" Frame Elevations & 1/4 Size Details

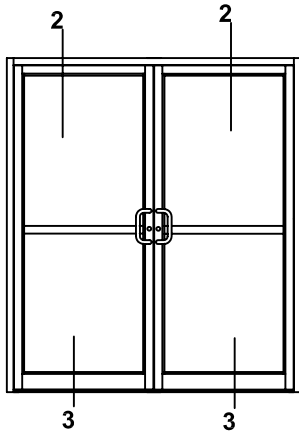


	<b>ATI</b>
<b>Report #</b>	<u>B3772-116-45</u>
<b>Date</b>	<u>10/20/2011</u>
<b>Simulator</b>	<u>Eric Bakula</u>



\*SEALANT, ROD, & ANCHORS NOT BY TUBELITE

**TUBELITE**  
DEPENDABLE  
LEADERS IN ECO-EFFICIENT STOREFRONT,  
CURTAINWALL AND ENTRANCE SYSTEMS



# Standard Doors - Pairs

## 2" Frame

### Elevations & 1/4 Size Details

**ATI**

Report # B3772-116-45

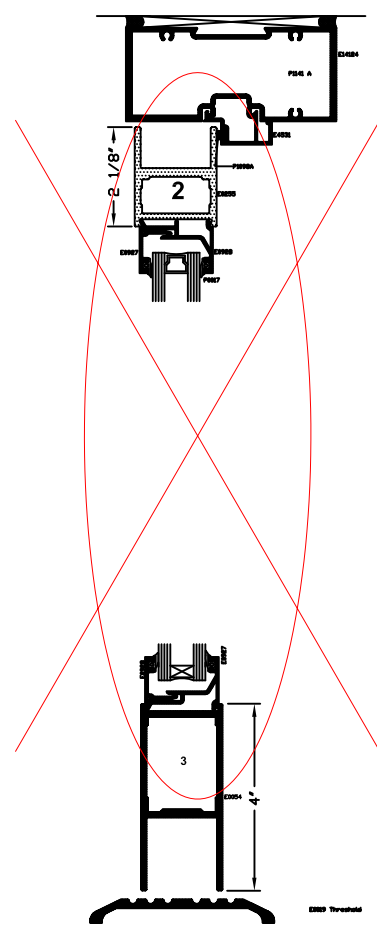
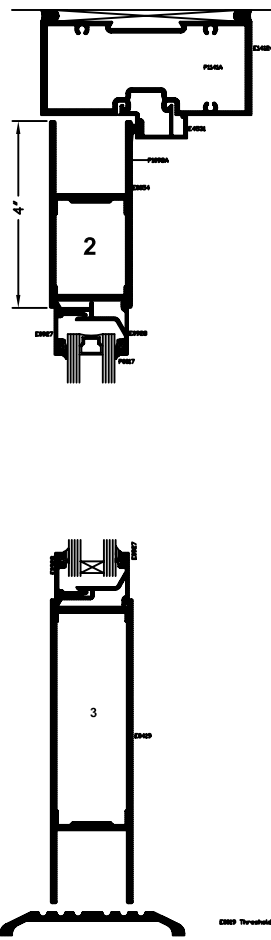
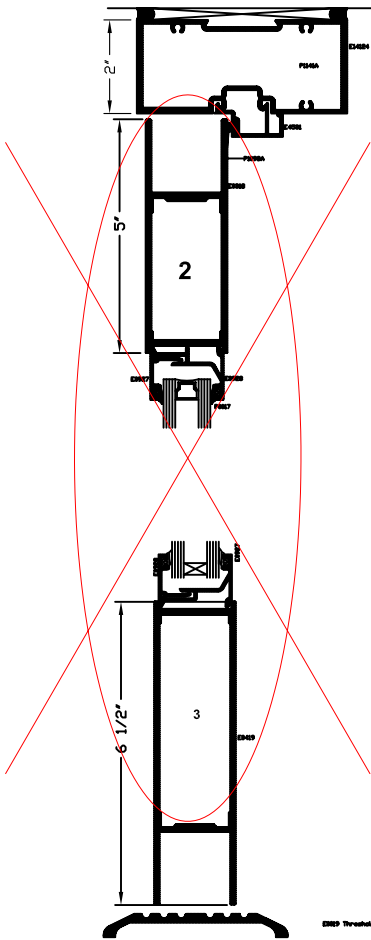
Date 10/20/2011

Simulator Eric Bahille

**Wide**

**Medium**

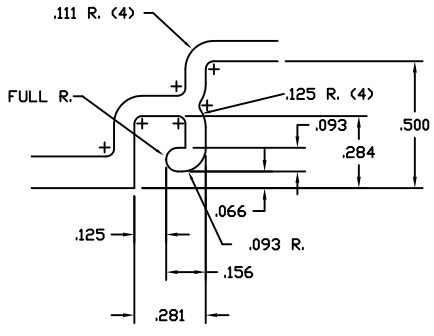
**Narrow**



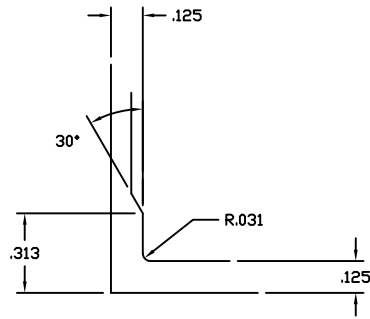
\*SEALANT, ROD, & ANCHORS NOT BY TUBELITE



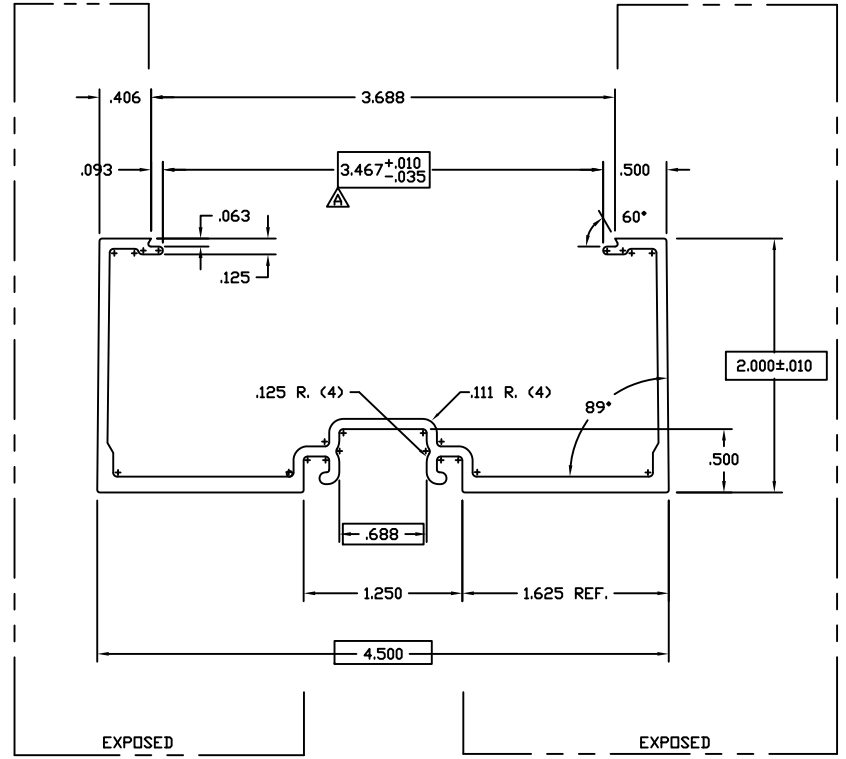




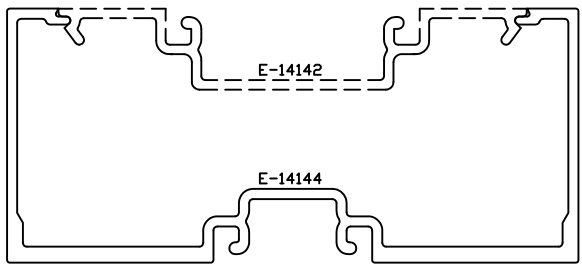
TWO TIMES SIZE



TWO TIMES SIZE



ACTUAL SIZE



ASSEMBLY

ALSO MATES WITH E-4543 FLAT CLOSURE

©2006 TUBELITE INC. ALL RIGHTS RESERVED  
 ALUMINUM ASSOCIATION STANDARD TOLERANCES APPLY UNLESS NOTED  
 ALL UNSPECIFIED RADII .015  
 \* INDICATES .031 RADIUS  
 □ DENOTES CRITICAL DIMENSION  
 ALL DIES PROPERTY OF TUBELITE

**TUBELITE**  
 Dependable  
 LEADING IN ECO-FRIENDLY OPERATIONAL CURTAINWALL AND ENTRANCE SYSTEMS

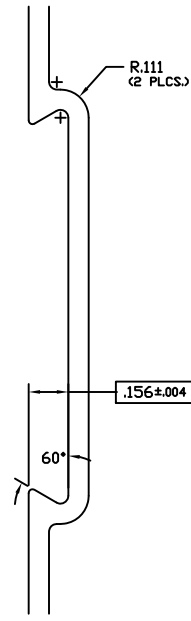
3056 WALKER RIDGE NW, SUITE G  
 WALKER, MICHIGAN 49544

WALL THK	.080	SECTION CLASS	S	MAT'L	6063-T5	RATIO	59:1
PERIMETER OUT (TOTAL)	21.100	AREA	1.001	WGT/FT	1.178		
FACTOR	19	CIRCLE SIZE	4.924	INTELL VOLUME	N/A		
RXX	1.672	SXX	1.245	IXX	2.801	CXX	2.250
RYY	.643	SYY	.287	IYY	.414	CYY	1.444

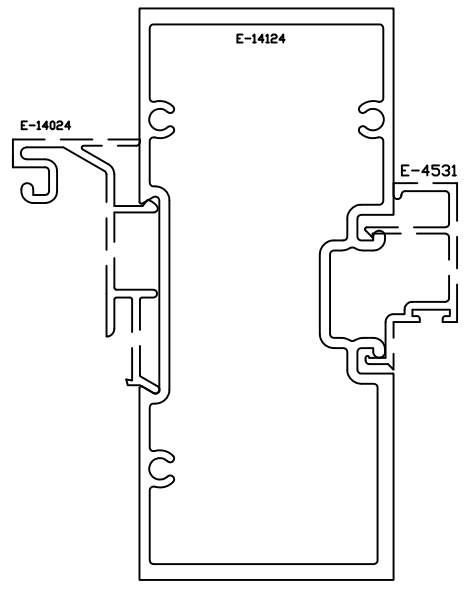
**DOOR JAMB 2" X 4 1/2"**  
**E14000 NON THERMAL STOREFRONT**

DRAWN BY	KMH	DRWG DATE	05/13/93	APPV'D BY		DATE APPV'D	
DWG SCALE	NOTED	PRODUCT CODE	190		E14144		

REV	DATE	DESCRIPTION	INTL
	5-13-93	RELEASE TO TOOLING	RHH
	7-7-93	REVISE EXTR # VAS E-14006	RHH
	7-29-93	RELEASE TO PRODUCTION	RHH
	10-28-96	REVISE EXTR # E-14144 TO BE SYMMETRICAL	SRK
	12-12-96	RE-RELEASE TO PRODUCTION	SRK
A	03/28/07	REDUCED OPENING FOR BETTER FIT	NIK

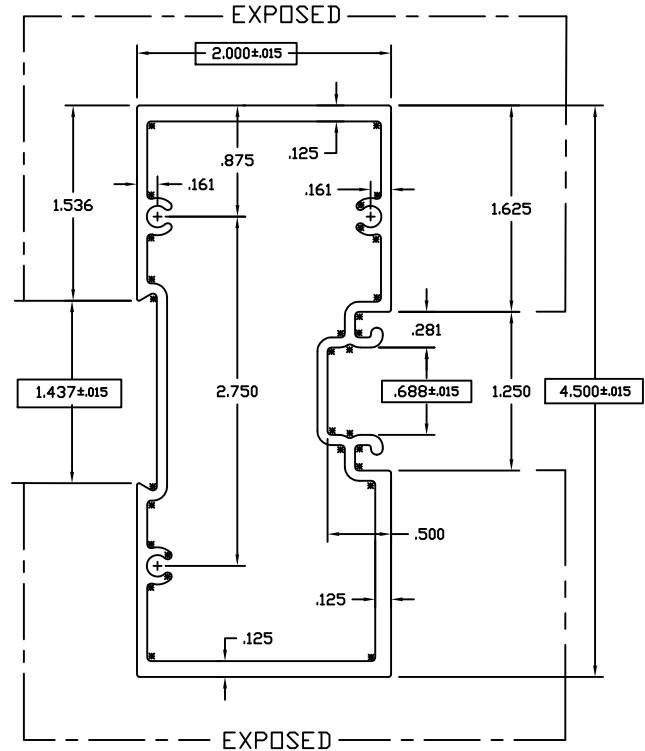


TWO TIMES SIZE

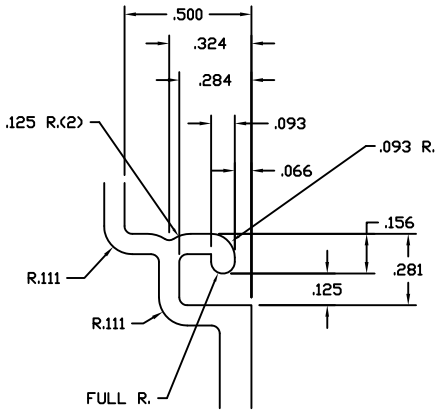


ASSEMBLY

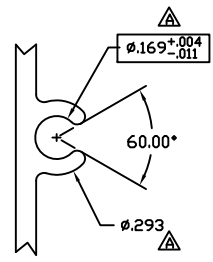
MATES W/ E-4532, E-4026 & E-14024



ACTUAL SIZE



TWO TIMES SIZE



TWO TIMES SIZE

©2006 TUBELITE INC. ALL RIGHTS RESERVED  
ALUMINUM ASSOCIATION STANDARD  
TOLERANCES APPLY UNLESS NOTED

**TUBELITE**  
DEPENDABLE  
LEADER IN ECO-FRIENDLY OPERATING  
CURTAINWALL AND ENTRANCE SYSTEMS

3056 WALKER RIDGE NW, SUITE G  
WALKER, MICHIGAN 49544

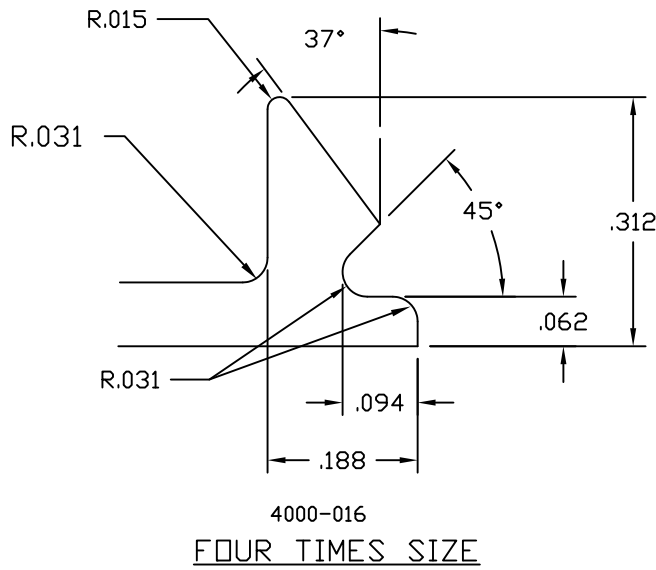
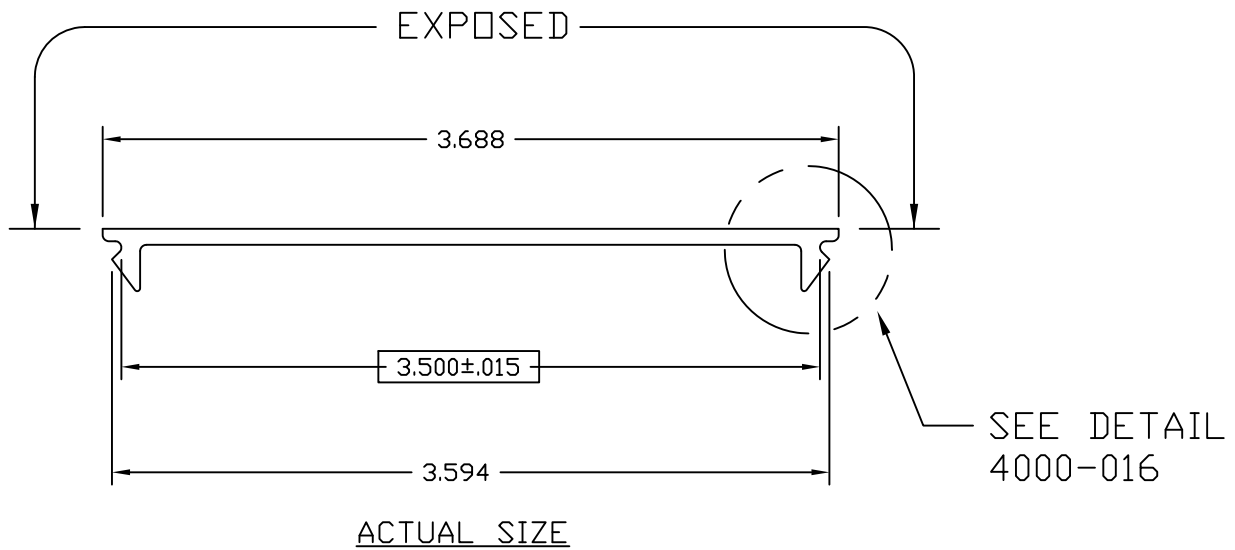
WALL THK. .080	SECTION H	MAT'L 6063-T5	RATIO 38:1
PERIMETER OUT (TOTAL) 15.371(29.969)	AREA 1.464	WGT/FT 1.722	
FACTOR 17	CIRCLE SIZE 4.924	JNFTL VOLUME N/A	
RXX 1.601	SXX 1.640	IXX 3.751	CXX 2.287
RYY .780	SYY .849	IYY .890	CYY 1.049

DENOTES CRITICAL DIMENSION  
 ALL DIES PROPERTY OF TUBELITE

REV	DATE	DESCRIPTION	INTL
	5-11-93	RELEASE TO TOOLING	KHM
	7-7-93	REVISE EXTR. # WAS E-14023	KHM
	7-28-93	RELEASE TO PRODUCTION	KHM
A	1/17/2011	J69 +.004/-0.011 was .162+/-0.004, .293 WAS .322	CRH

DOOR HEADER 2" X 4 1/2"  
E14000 NON THERMAL STOREFRONT

DRAWN BY SMH	DRWG DATE 05/11/93	APPV'D BY	DATE APPV'D
DWG SCALE NOTED	PRODUCT CODE 190	E14124	REV A



© 2006 TUBELITE INC. ALL RIGHTS RESERVED  
 ALUMINUM ASSOCIATION STANDARD  
 TOLERANCES APPLY UNLESS NOTED  
 ALL UNSPECIFIED RADII .015  
 \* INDICATES .031 RADIUS

**TUBELITE**  
 DEPENDABLE  
 LEADERS IN ECO-EFFICIENT STOREFRONT,  
 CURTAINWALL AND ENTRANCE SYSTEMS

3056 WALKER RIDGE NW, SUITE G  
 WALKER, MICHIGAN 49544

DENOTES CRITICAL DIMENSION  
 ALL DIES PROPERTY OF TUBELITE

REV	DATE	DESCRIPTION	INTL
		RELEASE TO TOOLING	
	6/26/86	RELEASE TO PRODUCTION	

WALL THK.	.080	SECTION CLASS	S	MAT'L	6063-T5	RATIO	165:1
PERIMETER OUT (TOTAL)	8.341	AREA	.334	WGT/FT	.393		
FACTOR	21	CIRCLE SIZE	3.688	INFILL VOLUME	N/A		

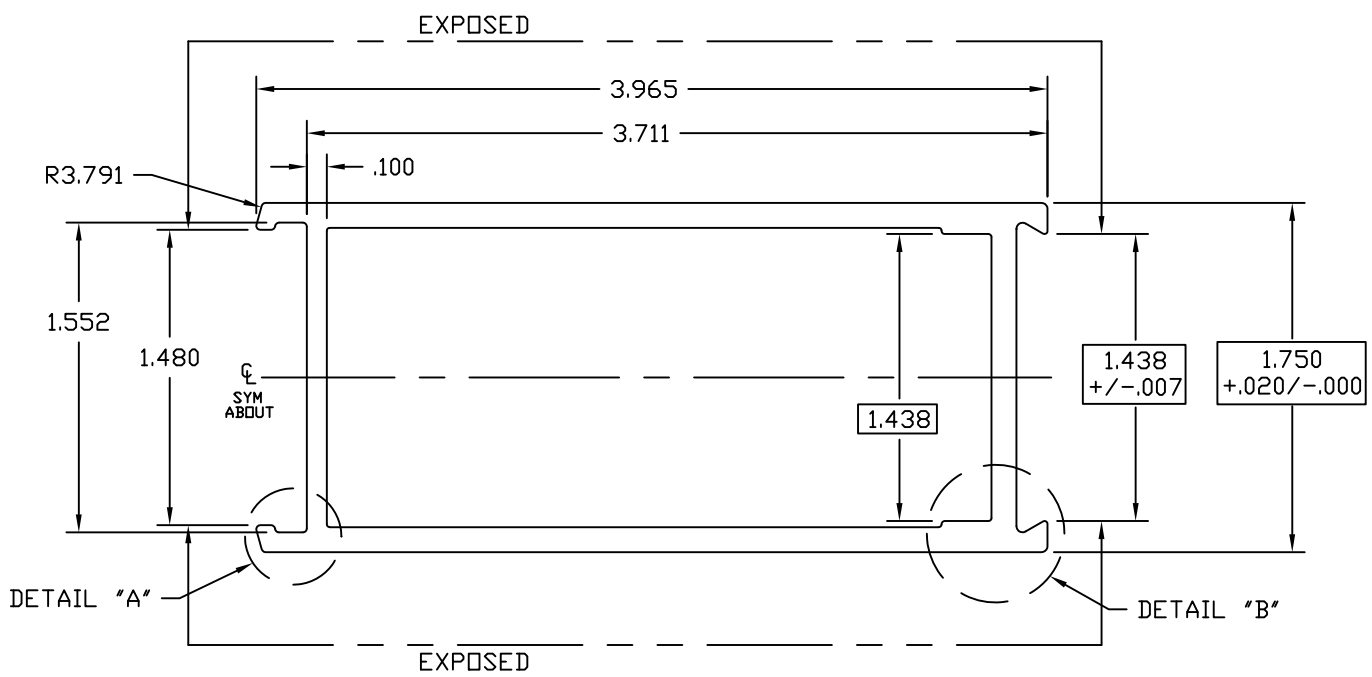
RXX	1.156	SXX	.242	IXX	.447	CXX	1.844
RYY	.054	SYY	.004	IYY	.001	CYY	.255

FLAT SNAP-IN FILLER  
 E4500 STOREFRONT

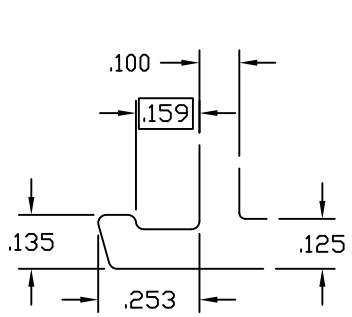
DRAWN BY	LS	DRWG DATE	10/22/85	APPV'D BY		DATE APPV'D	
DWG SCALE	FULL	PRODUCT CODE	160	E4543		REV	



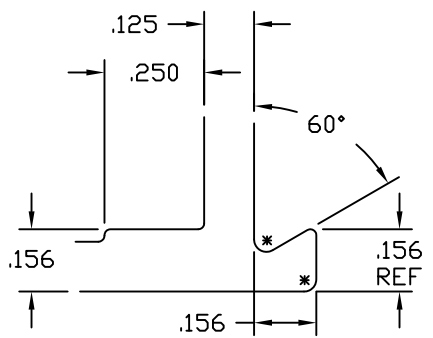




ACTUAL SIZE



DETAIL "A"  
TWO TIMES SIZE



DETAIL "B"  
TWO TIMES SIZE

DENOTES CRITICAL DIMENSION

© 2006 TUBELITE INC. ALL RIGHTS RESERVED  
ALUMINUM ASSOCIATION STANDARD  
TOLERANCES APPLY UNLESS NOTED  
ALL UNSPECIFIED RADII .015  
\* INDICATES .031 RADIUS

**TUBELITE**  
DEPENDABLE  
LEADERS IN ECO-EFFICIENT STOREFRONT,  
CURTAINWALL AND ENTRANCE SYSTEMS

3056 WALKER RIDGE NW, SUITE G  
WALKER, MICHIGAN 49544

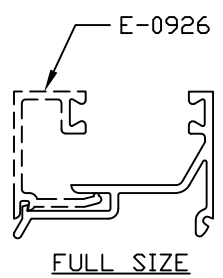
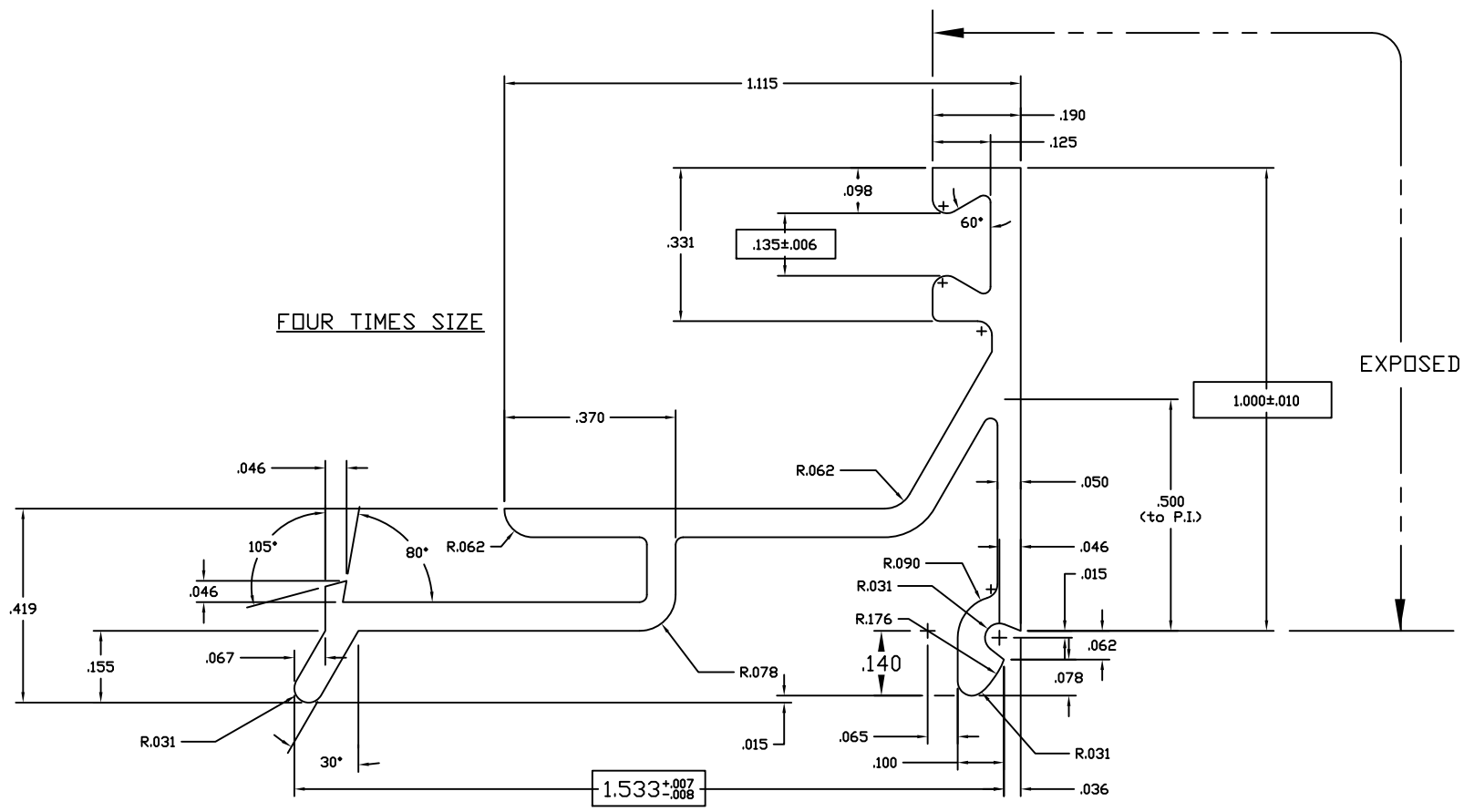
WALL THK.	NOTED	SECTION CLASS	H	MAT'L	6063-T5	RATIO	42:1
PERIMETER OUT (TOTAL)	12.336(21.945)	AREA	1.334	WGT/FT	1.569		
FACTOR	14	CIRCLE SIZE	4.293	INFILL VOLUME	N/A		

RXX	.735	SXX	.824	IXX	.721	CXX	.875
RYY	1.313	SYX	1.215	IYY	2.298	CYY	2.073

ADJ. ASTRAGAL STILE 1 3/4" X 4"  
STOCK DOORS

REV	DATE	DESCRIPTION	INTL
		RELEASED TO PRODUCTION - WAS E903H02 - ER-080702	LDD

DRAWN BY	LDD	DRWG DATE	03/13/07	APPV'D BY		DATE APPV'D	
DWG SCALE	NOTED	PRODUCT CODE	100	E1150			REV



**NOTES:**

- 1) USE E-0927/0928 FOR 1" MAT'L
- 2) USE E-0926/0928 FOR 5/8" MAT'L
- 3) USE GLAZING BEAD P-302 FOR BOTH SIDES OF GLASS OR PANEL

©2006 TUBELITE INC. ALL RIGHTS RESERVED  
 ALUMINUM ASSOCIATION STANDARD  
 TOLERANCES APPLY UNLESS NOTED

**TUBELITE**  
 EXPANDABLE  
 LEADING IN ECO-FRIENDLY OPERATING  
 CURTAINWALL AND ENTRANCE SYSTEMS

3056 WALKER RIDGE NW, SUITE G  
 WALKER, MICHIGAN 49544

WALL THK	.062	SECTION CLASS	S	MAT'L	6063-T5	RATIO	59:1
PERIMETER OUT (TOTAL)	7.540	AREA	.234	WGT/FT	.275		
FACTOR	27	CIRCLE SIZE	1.938	INFILL VOLUME	N/A		
RXX	.302	SXX	.030	IXX	.021	CXX	.701
RYY	.501	SYX	.113	IYY	.059	CYY	1.049

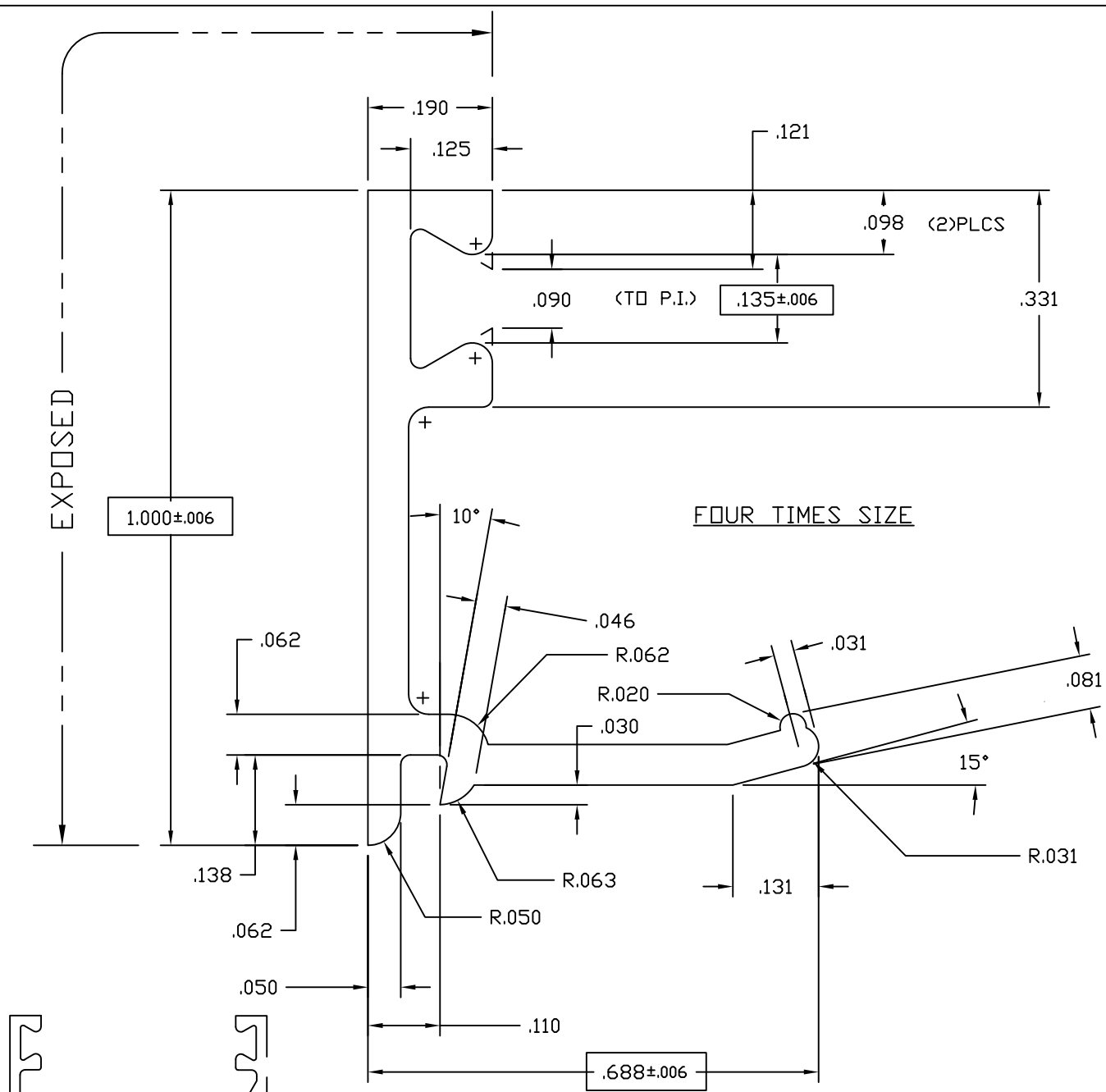
DENOTES CRITICAL DIMENSION  
 ALL DIES PROPERTY OF TUBELITE

REV	DATE	DESCRIPTION	INTL
	10/12/87	REMOVED LEG	RW

GLASS STOP, 1" HIGH FOR 1" GLASS STOCK DOORS

DRAWN BY	DH	DRWG DATE	07/03/84	APPV'D BY		DATE APPV'D	
DWG SCALE	NOTED	PRODUCT CODE	100	E0928		REV	





- NOTES:
- 1) USE WITH 1" INSULATED GLASS OR 1" PANEL
  - 2) USE GLAZING BEAD P-302 BOTH SIDES
  - 3) USE WITH E-0928 OR E-0929

© 2006 TUBELITE INC. ALL RIGHTS RESERVED  
 ALUMINUM ASSOCIATION STANDARD TOLERANCES APPLY UNLESS NOTED  
 ALL UNSPECIFIED RADII .015  
 \* INDICATES .031 RADIUS



3056 WALKER RIDGE NW, SUITE G  
 WALKER, MICHIGAN 49544

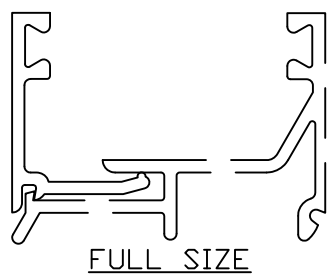
WALL THK.	.062	SECTION CLASS	S	MAT'L	6063-T5	RATIO	74:1
PERIMETER OUT (TOTAL)	4.001	AREA	.124	WGT/FT	.146		
FACTOR	27	CIRCLE SIZE	1.120	INFILL VOLUME	N/A		

RXX	.321	SXX	.023	IXX	.013	CXX	.321
RYY	.185	SYY	.008	IYY	.004	CYY	.185

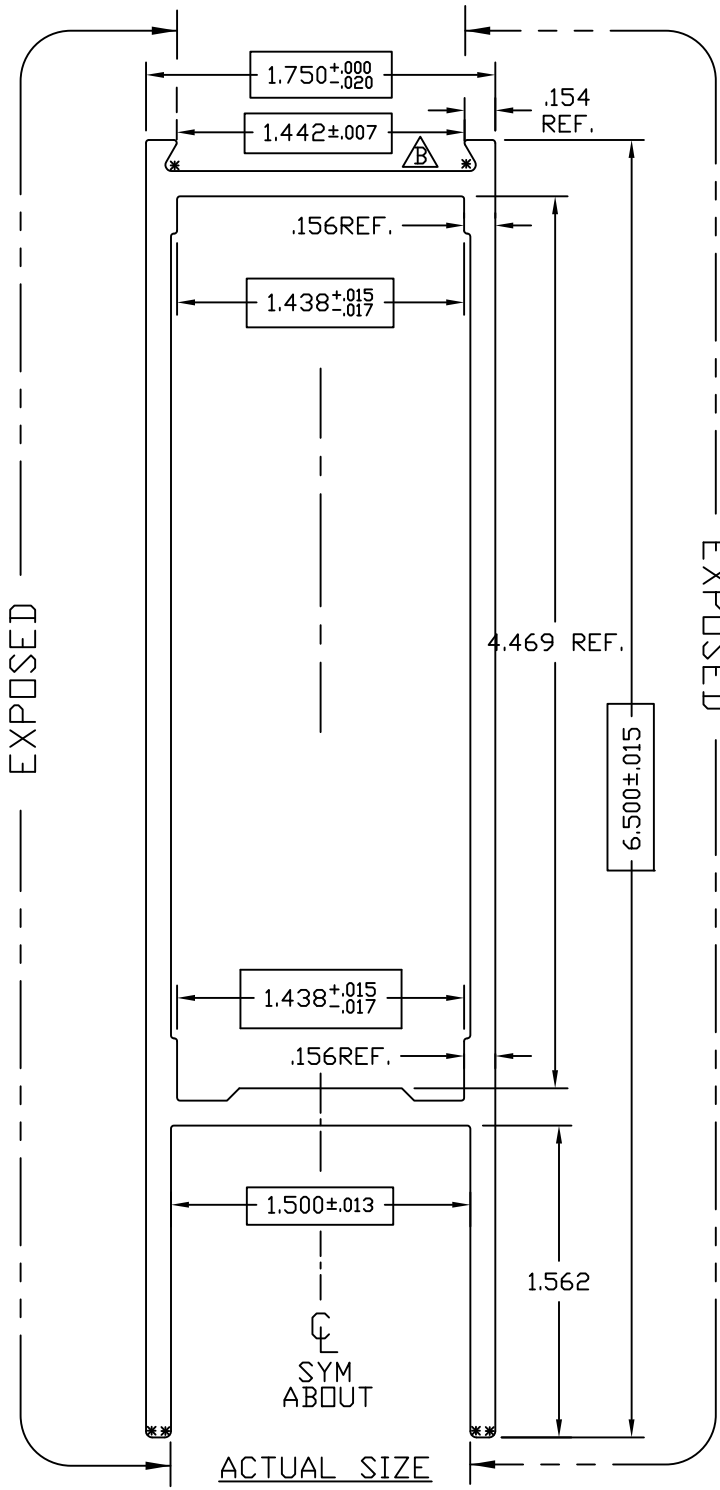
GLASS STOP, 1" HIGH FOR 1" GLASS STOCK DOORS

DRAWN BY	CRH	DRWG DATE	04/21/99	APPV'D BY		DATE APPV'D	
DWG SCALE	NOTED	PRODUCT CODE	100	E0927		REV	

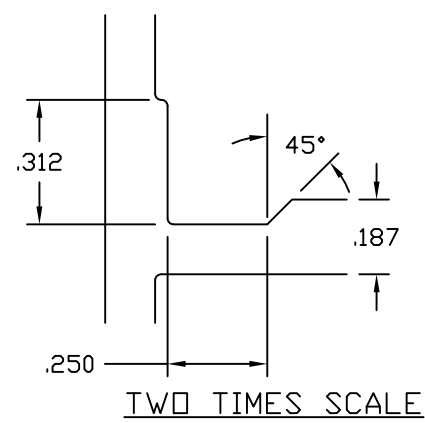
REV	DATE	DESCRIPTION	INTL
X	xx/xx/xx	XXXXXXXXXXXXXXXX	XXX



E0419  
B



TWO TIMES SCALE



$.125^{+0.003}_{-0.011}$  TYP WALL UNLESS NOTED

SNAP FIT W/E-0437

© 2006 TUBELITE INC. ALL RIGHTS RESERVED  
ALUMINUM ASSOCIATION STANDARD TOLERANCES APPLY UNLESS NOTED  
ALL UNSPECIFIED RADII .015  
\* INDICATES .031 RADIUS

**TUBELITE**  
DEPENDABLE  
LEADERS IN ECO-EFFICIENT STOREFRONT, CURTAINWALL AND ENTRANCE SYSTEMS

3056 WALKER RIDGE NW, SUITE G  
WALKER, MICHIGAN 49544

WALL THK.	NOTED	SECTION CLASS	H	MAT'L	6063-T5	RATIO	26:1
PERIMETER OUT (TOTAL)	19.959(26.440)	AREA	2.084	WGT/FT	2.451		
FACTOR	11	CIRCLE SIZE	6.720	INFILL VOLUME	N/A		

RXX	.747	SXX	1.330	IXX	1.164	CXX	.875
RYY	1.980	SYY	2.447	IYY	8.175	CYY	3.340

HORIZONTAL RAIL 6 1/2" X 1 3/4"  
CUSTOM DOORS/FRAMES

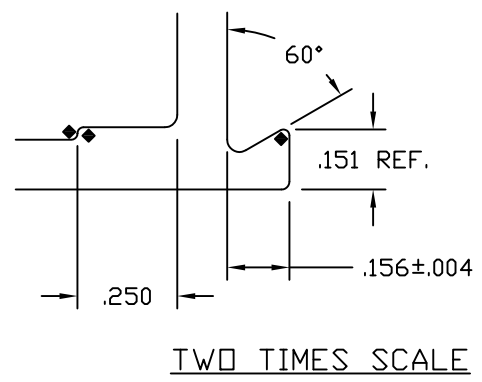
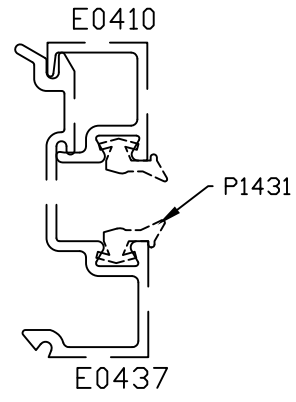
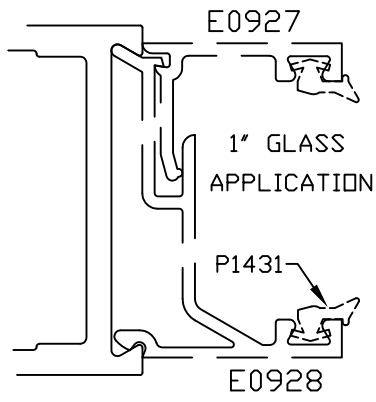
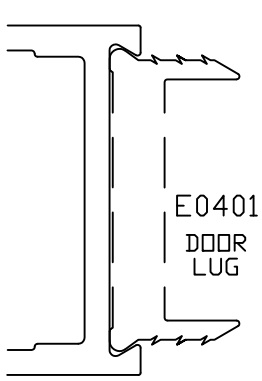
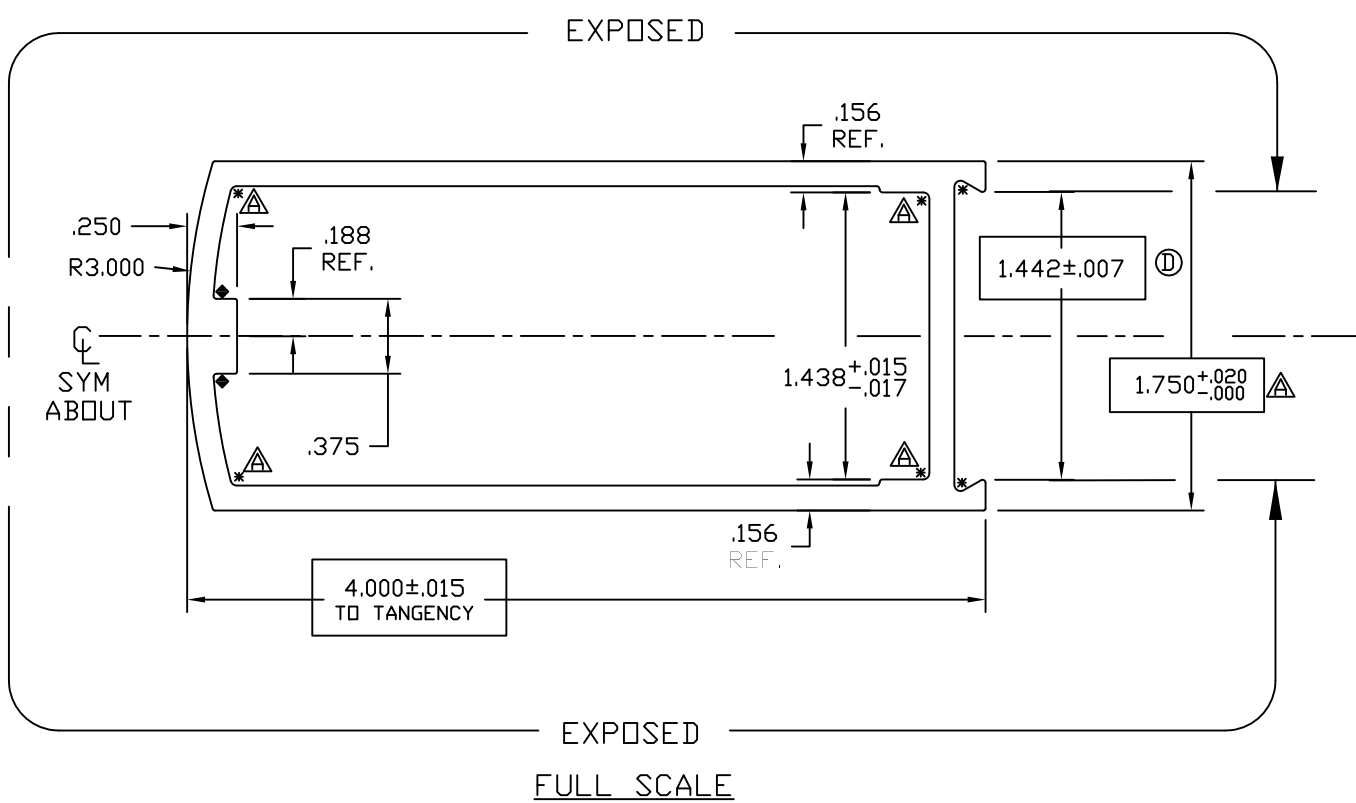
DRAWN BY	DH	DRWG DATE	04/19/84	APPV'D BY	CRH	DATE APPV'D	12/08/00
----------	----	-----------	----------	-----------	-----	-------------	----------

DWG SCALE	NOTED	PRODUCT CODE	110	E0419	REV	B
-----------	-------	--------------	-----	-------	-----	---

REV	DATE	DESCRIPTION	INTL
A	11/16/00	1.449 WAS 1.438	CRH
B	07/08/03	1.449 +/- .007 WAS 1.449 +.000/- .010	CRH

E0087

D



$.125 \begin{matrix} +.003 \\ -.011 \end{matrix}$  TYP WALL

INDICATES CRITICAL DIMENSION  
 SNAP FIT W/E0437(1/4"GLASS) AND E0928(1"GLASS)

© 2006 TUBELITE INC. ALL RIGHTS RESERVED  
 ALUMINUM ASSOCIATION STANDARD TOLERANCES APPLY UNLESS NOTED  
 ALL UNSPECIFIED RADII .015  
 \* INDICATES .031 RADIUS

**TUBELITE**  
 DEPENDABLE  
 LEADERS IN ECO-EFFICIENT STOREFRONT, CURTAINWALL AND ENTRANCE SYSTEMS

3056 WALKER RIDGE NW, SUITE G  
 WALKER, MICHIGAN 49544

WALL THK.	NOTED	SECTION CLASS	H	MAT'L	6063-T5	RATIO	39:1
PERIMETER OUT (TOTAL)	11.673(21.876)		AREA	1.409	WGT/FT	1.657	
FACTOR	13	CIRCLE SIZE	4.246	INFILL VOLUME	/A		

RXX	.716	SXX	.824	IXX	.722	CXX	.875
RYY	1.383	SYX	1.332	IYY	2.696	CYY	2.024

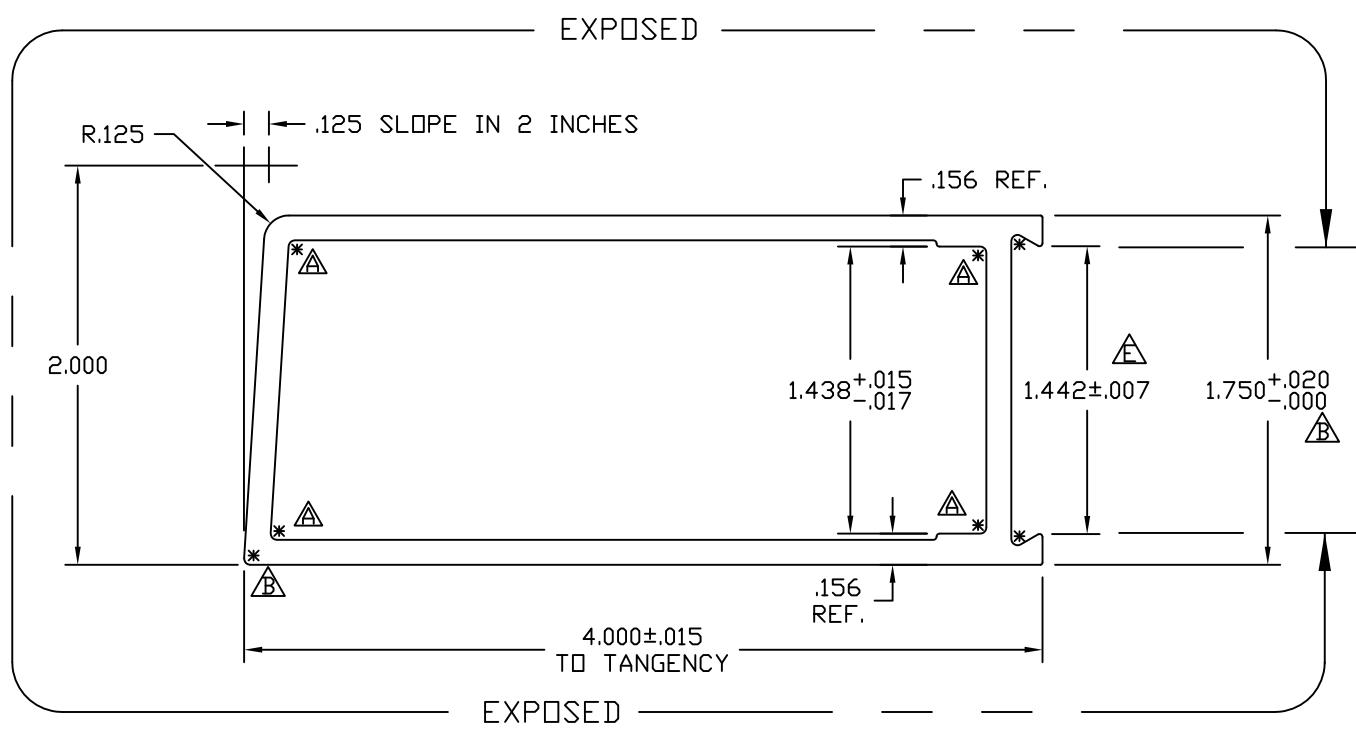
ROUND VERTICAL STILE 1 3/4" X 4"  
 CUSTOM DOOR/FRAMES

DRAWN BY	DH	DRWG DATE	04/04/84	APPV'D BY		DATE APPV'D	
DWG SCALE	NOTED	PRODUCT CODE	110	E0087		REV	D

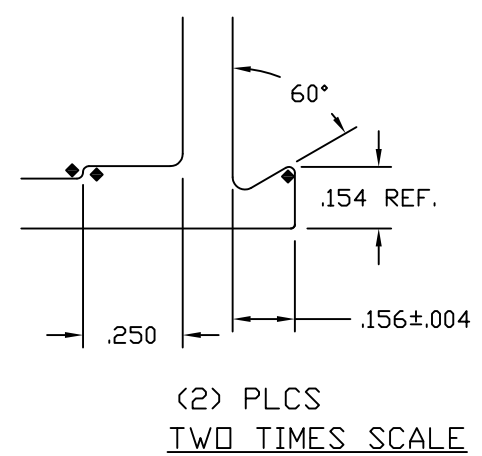
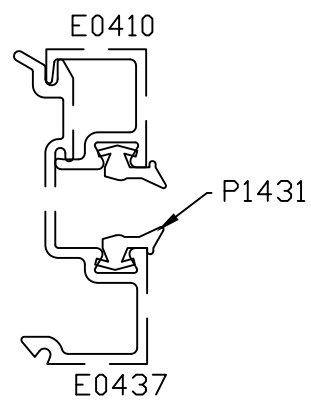
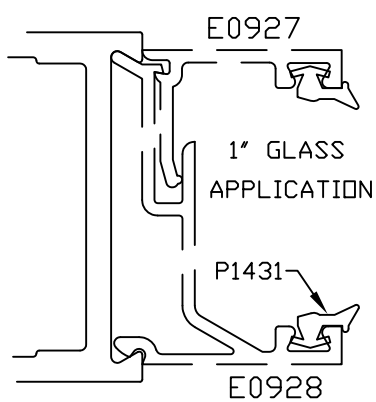
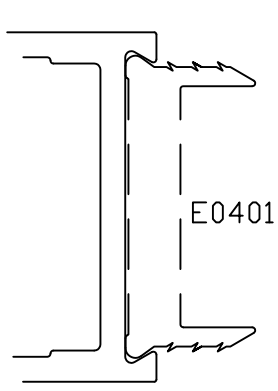
REV	DATE	DESCRIPTION	INTL
A	08/23/00	1.449 WAS 1.438, +.020/-0.000 WAS ±.010, ADDED .031R	CRH
B	09/29/00	+0.005/-0.010 WAS +.015/-0.000	CRH
C	12/01/00	+0.000/-0.010 WAS +0.005/-0.010	CRH
D	04/18/03	±.007 WAS +0.000/-0.010	CRH

E0086

E



FULL SCALE



SNAP FIT W/E0437(1/4"GLASS) AND E0928(1"GLASS)  
 .125 (+.003/- .011) TYP WALL

© 2006 TUBELITE INC. ALL RIGHTS RESERVED  
 ALUMINUM ASSOCIATION STANDARD TOLERANCES APPLY UNLESS NOTED  
 ALL UNSPECIFIED RADII .015  
 \* INDICATES .031 RADIUS

**TUBELITE**  
 DEPENDABLE  
 LEADERS IN ECO-EFFICIENT STOREFRONT, CURTAINWALL AND ENTRANCE SYSTEMS

3056 WALKER RIDGE NW, SUITE G  
 WALKER, MICHIGAN 49544

WALL THK.	NOTED	SECTION CLASS	H	MAT'L	6063-T5	RATIO	40:1
PERIMETER OUT (TOTAL)	11.757(21.761)		AREA	1.374	WGT/FT	1.615	
FACTOR	13	CIRCLE SIZE	4.360	INFILL VOLUME	N/A		

RXX	.728	SXX	.824	IXX	.728	CXX	.884
RYY	1.368	SYX	1.270	IYY	2.571	CYY	2.024

BEVELED VERTICAL STILE 1 3/4" X 4"  
 CUSTOM DOORS/FRAMES

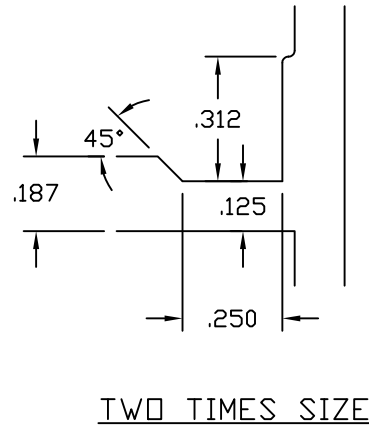
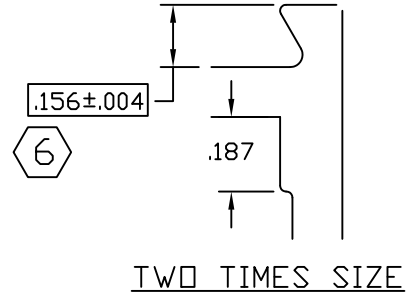
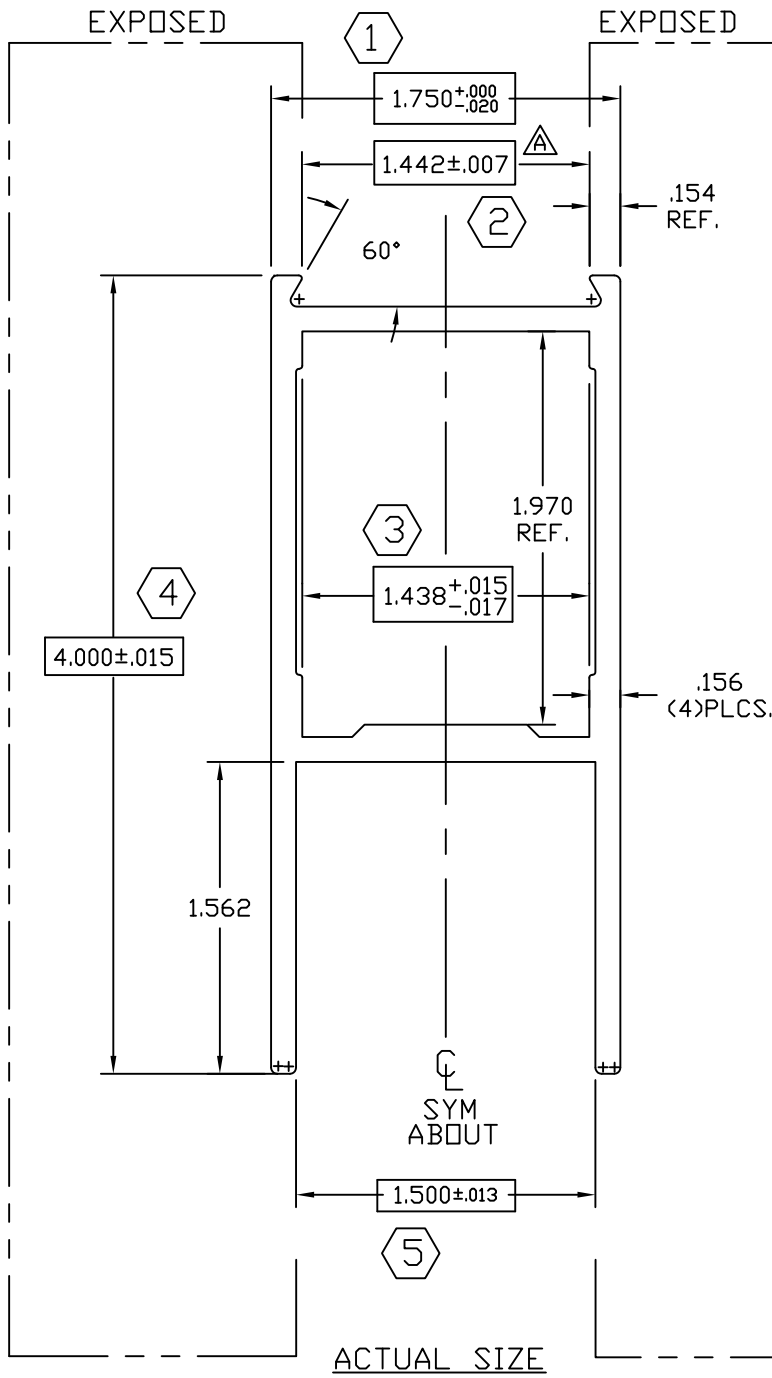
□ DENOTES CRITICAL DIMENSION  
 ALL DIES PROPERTY OF TUBELITE

REV	DATE	DESCRIPTION	INTL
A	7/7/00	1.449 WAS 1.438, REV. TOL ON 1.750	CRH
		REMOVED .156 X .250 PAD AREA AND ADDED .031 RADII	
B	08/23/00	1.750 +.020/- .000 WAS +.000/- .020, ADDED .031 R	CRH
C	09/29/00	+ .005/- .010 WAS +.015/- .000	CRH
D	12/1/00	+ .000/- .010 WAS +.005/- .010	CRH
E	01/22/02	1.442 +/- .007 WAS 1.449 +.000/- .010	CRH

DRAWN BY	DLH	DRWG DATE	04/04/84	APPV'D BY		DATE APPV'D	
DWG SCALE	NOTED	PRODUCT CODE	110	E0086		REV	E

E0054

C



7 SNAP FIT WITH E-0437  
 $.125 \begin{smallmatrix} +.003 \\ -.011 \end{smallmatrix}$  TYP WALL UNLESS NOTED

ACTUAL SIZE

© 2006 TUBELITE INC. ALL RIGHTS RESERVED  
 ALUMINUM ASSOCIATION STANDARD  
 TOLERANCES APPLY UNLESS NOTED  
 ALL UNSPECIFIED RADII .015  
 \* INDICATES .031 RADIUS

**TUBELITE**  
 DEPENDABLE  
 LEADERS IN ECO-EFFICIENT STOREFRONT,  
 CURTAINWALL AND ENTRANCE SYSTEMS

3056 WALKER RIDGE NW, SUITE G  
 WALKER, MICHIGAN 49544

WALL THK.	NOTED	SECTION CLASS	H	MAT'L	6063-T5	RATIO	38:1
PERIMETER OUT (TOTAL)	14.972(22.036)		AREA	1.460	WGT/FT	1.715	
FACTOR	13	CIRCLE SIZE	4.352	INFILL VOLUME	N/A		

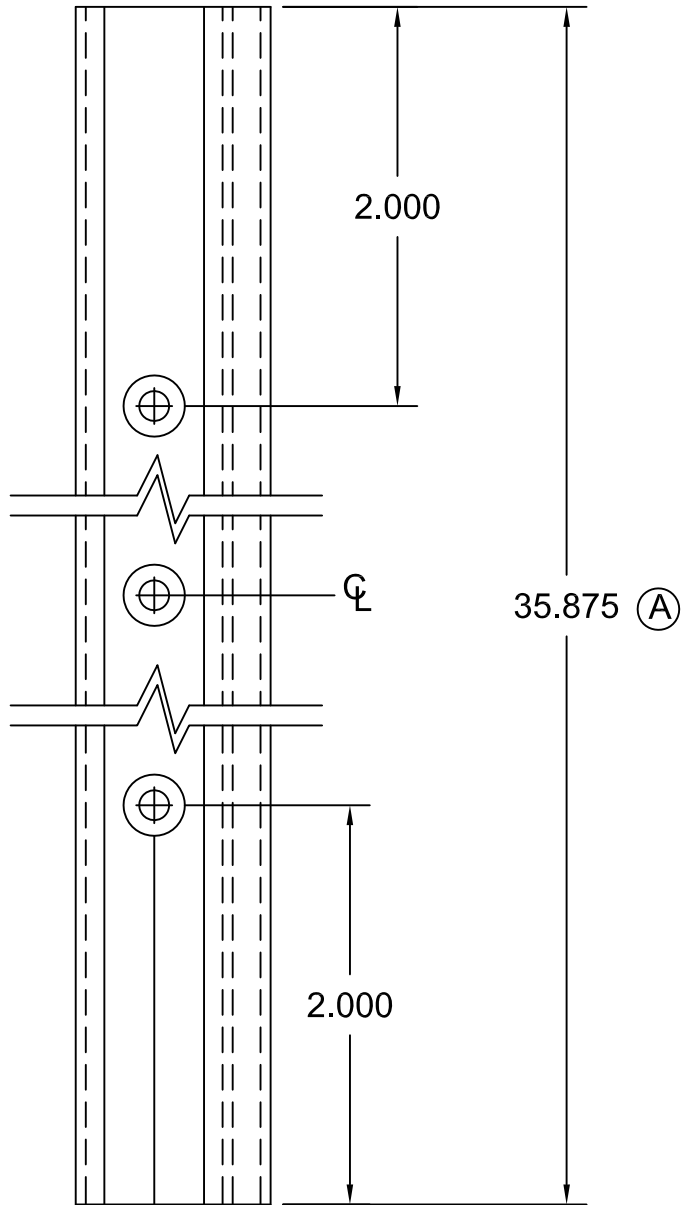
RXX	1.153	SXX	.890	IXX	1.941	CXX	2.182
RYY	.717	SYX	.858	IYY	.751	CYY	.875

HORIZONTAL RAIL 4" X 1 3/4"  
 STOCK DOORS

DRAWN BY	DAT	DRWG DATE	03/31/84	APPV'D BY	DATE APPV'D	REV	C
DWG SCALE	NOTED	PRODUCT CODE	100	E0054			

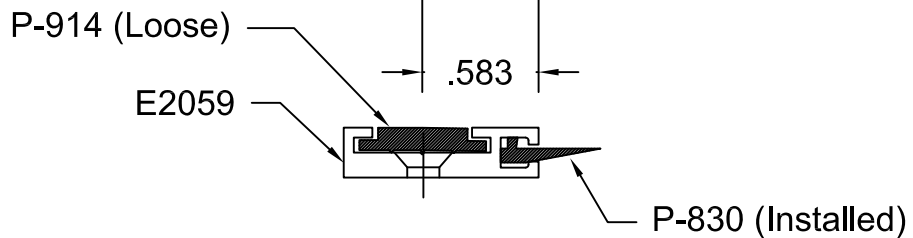
□ DENOTES CRITICAL DIMENSION  
 ALL DIES PROPERTY OF TUBELITE

REV	DATE	DESCRIPTION	INTL
A	11/22/91	REVISED CALCULATIONS	KMH
B	12/10/91	REVISED CALCULATIONS	KMH
C	4/2/02	WAS 1.438 +.01/-0.013	CRH



Operations:

1. Cut to length as required from E2059
2. Drill 3 holes with #25 Drl & Ctsk for S-064 (#6 FHCS)
3. Cut P-830 to length, Install, & Crimp ends
4. Cut P-914 to length, and install.
5. Paint ends as required
6. Ship with three (3) S064 Screws.



© 2006 TUBELITE INC. ALL RIGHTS RESERVED

ALL UNSPECIFIED RADII .015

\* INDICATES .031 RADIUS

□ DENOTES CRITICAL DIMENSION

**TUBELITE®**  
 DEPENDABLE  
 LEADERS IN ECO-EFFICIENT STOREFRONT,  
 CURTAINWALL AND ENTRANCE SYSTEMS

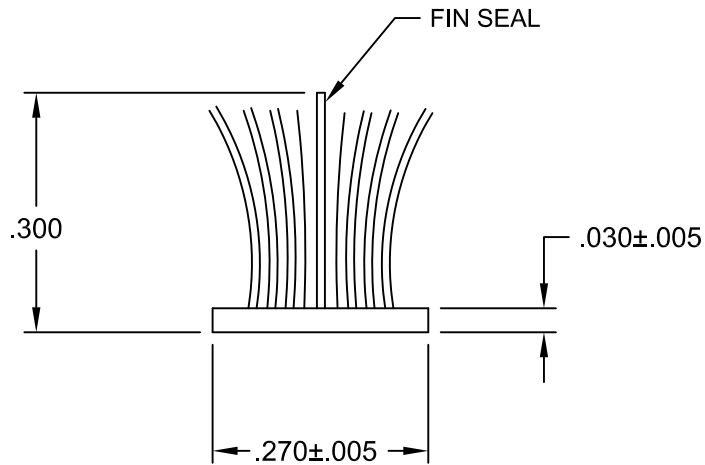
3056 WALKER RIDGE NW, SUITE G  
 WALKER, MICHIGAN 49544

REV	DATE	DESCRIPTION	INTL
	7/29/83	Released Part per ED 128	PJ
A	05/17/90	ED #1222 Dim was 34.875	KMH
B	8/24/01	Redrawn for CAD	DMT
C	06/19/03	OUTSOURCE - ADD S064 SCREWS	SRD

Door Seal to use with E2058 Threshold			
DRAWN BY PJ	DRWG DATE 05/09/83	APPV,D BY	DATE APPV'D
DRWG SCALE Full	PRODUCT CODE 380	<b>P1275</b>	
			REV <b>C</b>

P1098A

B



Actual Size

© 2006 TUBELITE INC. ALL RIGHTS RESERVED

ALL UNSPECIFIED RADII .015

\* INDICATES .031 RADIUS

□ DENOTES CRITICAL DIMENSION

**TUBELITE®**  
*DEPENDABLE*  
 LEADERS IN ECO-EFFICIENT STOREFRONT,  
 CURTAINWALL AND ENTRANCE SYSTEMS

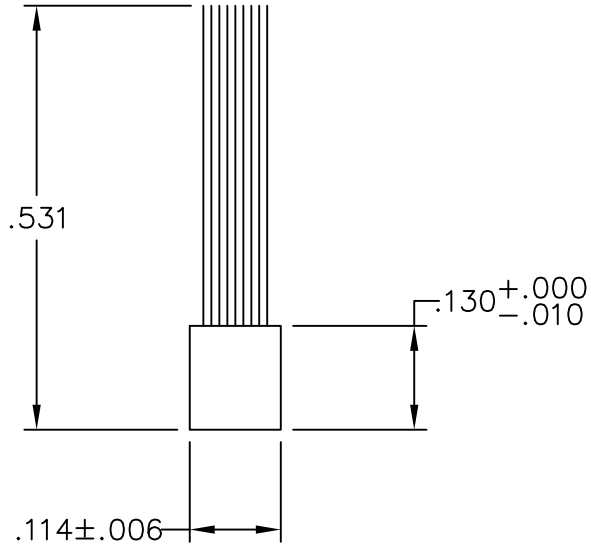
3056 WALKER RIDGE NW, SUITE G  
WALKER, MICHIGAN 49544

REV	DATE	DESCRIPTION	INTL
A	03/08/83	Release Part per ED 109	
B	05/29/02	Redrawn for CAD	DMT

<p>Poly Bond Fin-Seal Weathering use with Door Stop E1377</p>			
DRAWN BY	Don H	DRWG DATE	06/03/83
APPV,D BY		DATE APPV'D	
DRWG SCALE	Noted	PRODUCT CODE	380
P1098A			REV B



Actual Size



Four Times Size

Purchased Part

Schlege Pile Weathering  
Part Number 364-1006-5101

© 2006 TUBELITE INC. ALL RIGHTS RESERVED

ALL UNSPECIFIED RADII .015

\* INDICATES .031 RADIUS

□ DENOTES CRITICAL DIMENSION

**TUBELITE®**  
*DEPENDABLE*  
LEADERS IN ECO-EFFICIENT STOREFRONT,  
CURTAINWALL AND ENTRANCE SYSTEMS

3056 WALKER RIDGE NW, SUITE G  
WALKER, MICHIGAN 49544

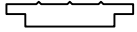
REV	DATE	DESCRIPTION	INTL
A	05/03/02	Redrawn for CAD	DMT

Pile Weathering to use with E1195 and E1152			
DRAWN BY PJ	DRWG DATE 10/03/75	APPV,D BY	DATE APPV'D
DRWG SCALE Noted	PRODUCT CODE 110	P938	
			REV A

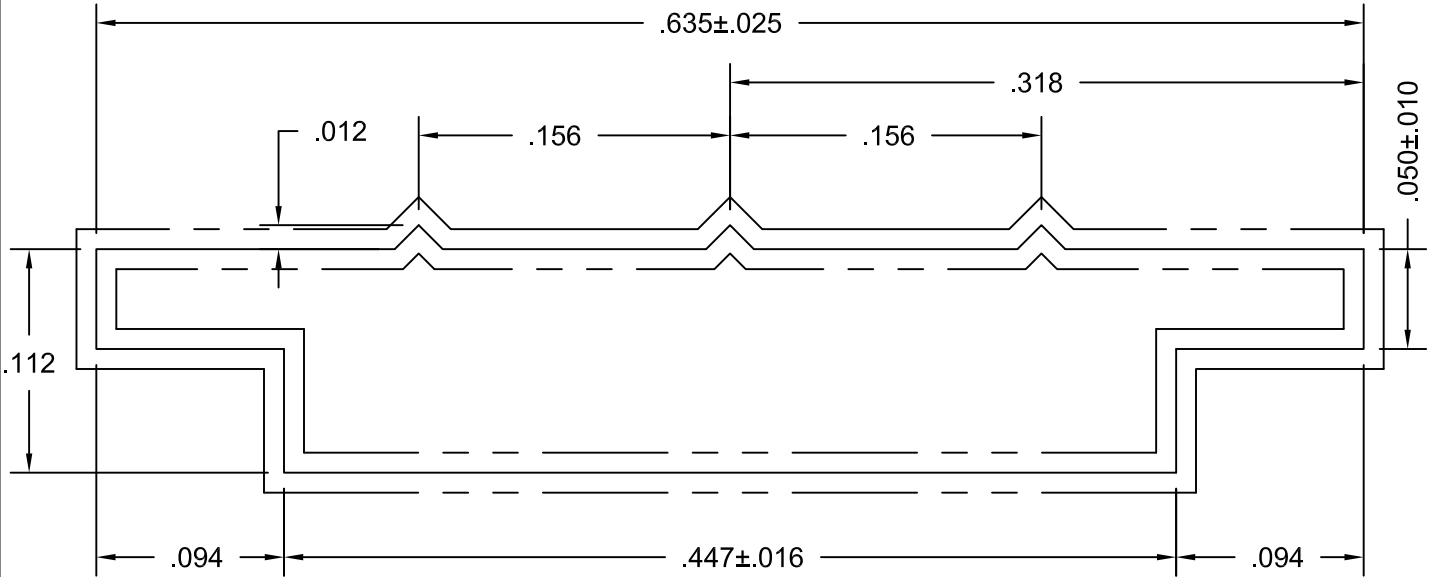


P914

A



ACTUAL SIZE



Ten Times Size

NOTE: Part to receive Silicone Bath after Extruding

Purchased Part  
Avon Rubber  
90 Durometer  
250' Rolls

© 2006 TUBELITE INC. ALL RIGHTS RESERVED

ALL UNSPECIFIED RADII .015

\* INDICATES .031 RADIUS

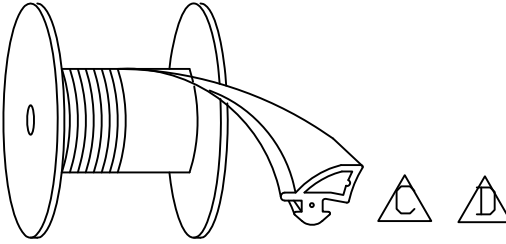
□ DENOTES CRITICAL DIMENSION

**TUBELITE**  
DEPENDABLE  
LEADERS IN ECO-EFFICIENT STOREFRONT,  
CURTAINWALL AND ENTRANCE SYSTEMS

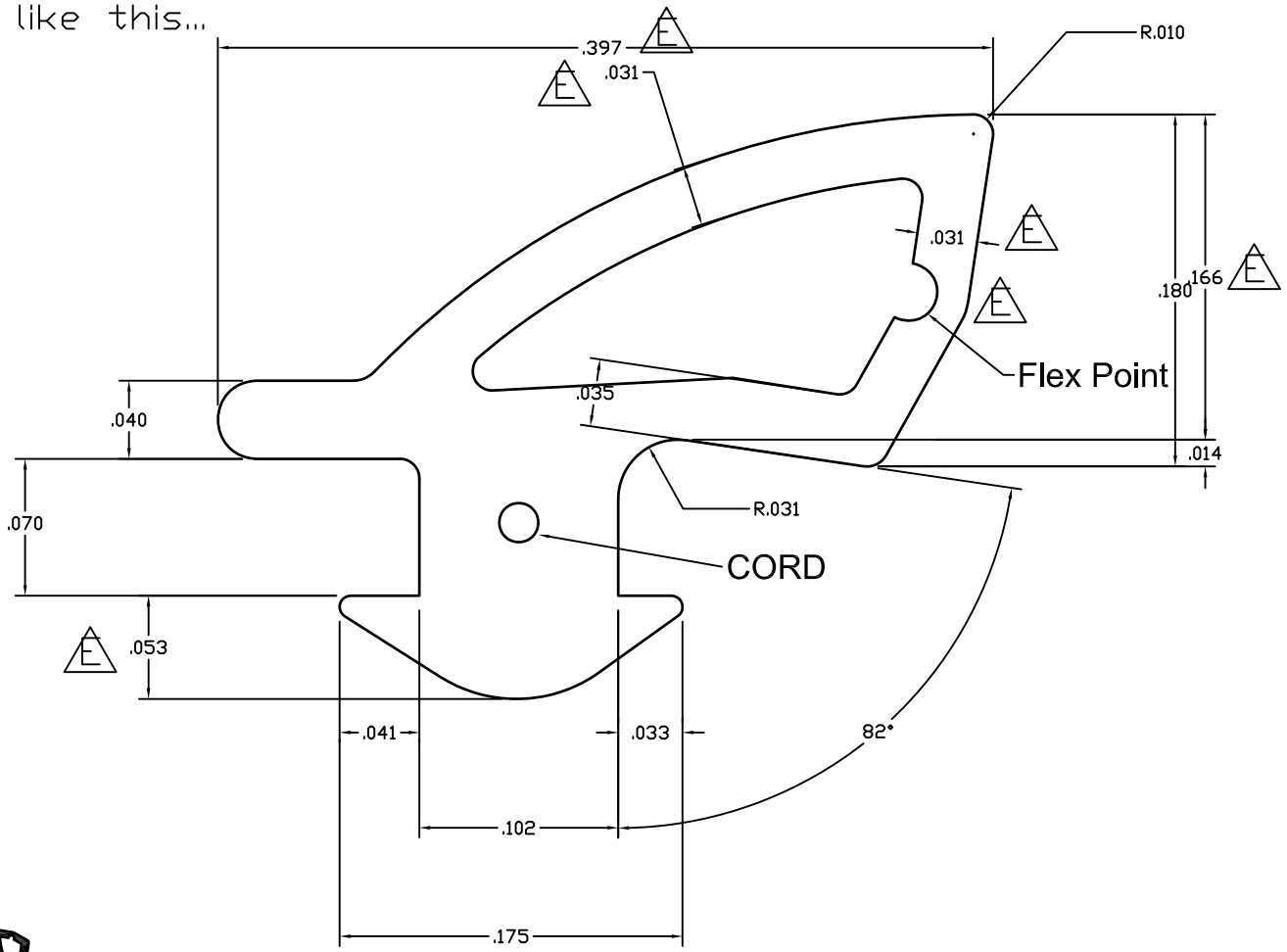
3056 WALKER RIDGE NW, SUITE G  
WALKER, MICHIGAN 49544

REV	DATE	DESCRIPTION	INTL
A	01/19/96	Redrawn for AutoCAD	DMT

<p>EPDM Rubber Glazing Use with M1061, M1063, M1202</p>			
DRAWN BY	KMH	DRWG DATE	01/19/96
APPV,D BY		DATE APPV,D	
DRWG SCALE	Noted	PRODUCT CODE	380
		<b>P914</b>	REV <b>A</b>



Material must UNREEL like this...



ACTUAL SIZE

MATERIAL: EPDM 60 DUROMETER WITH CORD

© 2006 TUBELITE INC. ALL RIGHTS RESERVED  
 ALL UNSPECIFIED RADII .015  
 \* INDICATES .031 RADIUS  
 □ DENOTES CRITICAL DIMENSION

**TUBELITE®**  
 DEPENDABLE  
 LEADERS IN ECO-EFFICIENT STOREFRONT,  
 CURTAINWALL AND ENTRANCE SYSTEMS

3056 WALKER RIDGE NW, SUITE G  
 WALKER, MICHIGAN 49544

REV	DATE	DESCRIPTION	INTL
A	08/20/07	MODIFIED DART: .070 WAS .060 AND .051 WAS .061 ADDED CORD	NIK
B	10/16/08	ADDED MANUFACTURER'S TOLERANCES FOR REFERENCE	SRD
C	10/22/10	Modified gasket position of how the reel should roll	TT
D	12/16/10	Modified gasket position of how the reel should roll	TT
E	02/15/11	Rev flex pt, thickness was .032, .180 was .188	TT

1/4"-1" DOOR GLAZING GASKET 500' ROLLS			
DRAWN BY NIK	DRWG DATE 4-17-07	APPV.D BY	DATE APPV'D
DRWG SCALE 10X	PRODUCT CODE 100	P0017	REV E