

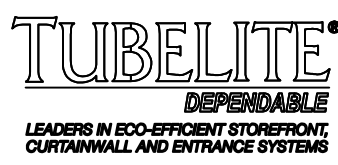
TABLE A. ELEV. E1/1 INFORMATION			
DESIGN PRESSURE	+70/-70 PSF	DESIGN PRESSURE	+78/-71 PSF
GLAZING TYPE	1 OR 2	GLAZING TYPE	4
MISSILE RATING	LARGE MISSILE	MISSILE RATING	SMALL MISSILE

E1 TWIN-SPAN ELEVATION
 1 WET GLAZED, SEE TABLE A FOR LIMITS OF USE

TABLE OF CONTENTS:

SHITS	CONTENT
1	NOTES, TWIN-SPAN ELEVATION
2	SINGLE-SPAN ELEV., GLAZING, ANCHORS
3-7	SECTION DETAILS
8	SPLICE JOINT
9-10	ANCHOR DETAILS
11-12	ASSEMBLY DETAILS
13	PART DRAWINGS
14	PART DWGS, BILL OF MATERIALS

- GENERAL NOTES**
- THIS CURTAIN WALL SYSTEM HAS BEEN TESTED TO TAS 201/202/203, AND MEETS THE REQUIREMENTS OF THE FLORIDA BUILDING CODE (FBC), CURRENT EDITION, INCLUDING THE HIGH VELOCITY HURRICANE ZONE.
 - THE INSTALLED CURTAIN WALL SYSTEM SHALL BE FABRICATED, GLAZED, AND ANCHORED IN ACCORDANCE WITH THIS DRAWING AS WELL AS THE APPLICABLE TEST REPORTS. A FLORIDA LICENSED ENGINEER FAMILIAR WITH CURTAIN WALL DESIGN SHALL APPROVE SHOP DRAWINGS FOR EACH PROJECT, AND THIS ENGINEER OF RECORD SHALL TAKE FULL RESPONSIBILITY FOR THE INSTALLED SYSTEM DESIGN AS A WHOLE WHILE MAKING SURE THAT THE LIMITATIONS INDICATED IN THIS DRAWING HAVE NOT BEEN EXCEEDED.
 - THIS DRAWING INDICATES VARIOUS APPROVED GLAZING METHODS AND FRAMING TYPES WHICH MAY BE USED SINGLY OR IN COMBINATION FOR EACH PROJECT. ANY NUMBER OF PANELS MAY BE USED HORIZONTALLY PROVIDED THE MAXIMUM DLO SIZES AS INDICATED IN THIS DRAWING ARE NOT EXCEEDED.
 - THIS PRODUCT IS IMPACT RESISTANT AND DOES NOT REQUIRE THE USE OF SHUTTERS IN WINDBORNE DEBRIS AREAS. AS INDICATED IN TABLE F, SHEET 2, GLASS TYPES 1 AND 2 ARE LARGE MISSILE IMPACT RESISTANT AND GLASS TYPE 3 IS SMALL MISSILE IMPACT RESISTANT.
 - REQUIRED DESIGN PRESSURES SHALL BE DETERMINED FOR EACH PROJECT IN ACCORDANCE WITH APPLICABLE CODE REQUIREMENTS AND GOVERNING WIND SPEEDS FOR THE PROJECT LOCATION.
 - THE ALLOWABLE DESIGN PRESSURE RATINGS IN THIS DRAWING ARE AS LIMITED BY ASTM E-1300-04 GLASS TABLES, TESTING, AND CALCULATIONS.
 - DISSIMILAR MATERIALS THAT COME INTO CONTACT, INCLUDING BUT NOT LIMITED TO FASTENERS IN CONTACT WITH PRESSURE TREATED WOOD SUBSTRATES OR ALUMINUM, SHALL BE COATED OR OTHERWISE PROTECTED PER FBC REQUIREMENTS TO PREVENT CORROSION OR GALVANIC REACTIONS.
 - SEALING AND FLASHING STRATEGIES FOR OVERALL WATER INFILTRATION RESISTANCE OF THE INSTALLED PRODUCT ARE NOT WITHIN THE SCOPE OF THIS APPROVAL AND SHALL BE THE RESPONSIBILITY OF OTHERS.
 - THE 4/3 ALLOWABLE STRESS INCREASE HAS NOT BEEN USED IN THE ANCHOR ANALYSIS FOR THIS SYSTEM. THE 1.6 CD FACTOR WAS USED IN THE ANALYSIS OF WOOD SUBSTRATE.
 - STRUCTURAL INTEGRITY OF SUBSTRATE MATERIALS TO RECEIVE THE LOADS FROM THIS PRODUCT, TO BE VERIFIED BY OTHERS OR AS APPROVED BY THE AUTHORITY HAVING JURISDICTION.
 - THIS PRODUCT SHALL BE INSTALLED USING ONE OF THE APPROVED FASTENING OR WELDING METHODS INDICATED IN THIS DRAWING, AS APPROPRIATE FOR THE SUBSTRATE TYPE. WELD SIZES AND LOCATIONS FOR INTERMEDIATE ANCHORS SHALL BE AS INDICATED IN THE DETAILS FOR EACH CLIP TYPE, AND FOR U, F, AND T-ANCHORS THE ANCHOR SIZE, EMBEDMENT, EDGE DISTANCE, AND PATTERN WITHIN THE CLIP SHALL BE IN ACCORDANCE WITH TABLE E, SHEET 2, AND APPLICABLE DETAILS.
 - MINIMUM ANCHOR EMBEDMENTS LISTED IN THIS DRAWING SHALL BE BEYOND WALL DRESSING OR STUCCO AND FULLY INTO SUBSTRATE.
 - SUBSTRATES SHALL MEET THE MINIMUM STRENGTH REQUIREMENTS AS SHOWN IN TABLE E, SHEET 2. CONCRETE SUBSTRATES SHALL NOT BE CRACKED.



3056 WALKER RIDGE DRIVE N.W.
 WALKER, MICHIGAN 49544
 PH: 800.866.2277
 FX: 616.301.0008
 WEB SITE: WWW.TUBELITEINC.COM

**TUBELITE
 CW 400 CAPTURED IMPACT
 CURTAIN WALL SYSTEM**

REV	DATE	DRAWN	DESCRIPTION
O	5.7.14	LT	ORIGINAL RELEASE
A	2.24.15	LT	ANCHOR REVISIONS
B	8.27.15	LT	ADDED LM TWIN

REVISION HISTORY:

DATE: 05.07.14
 DRAWING NUMBER: FPA-400-CAP-IMP
 DRAWN: N.T.S.
 FINAL REVIEW: B

SCALE: N.T.S.
 REVISION: B
 SHEET NAME: NOTES, ELEVATION

SHEET: 1 OF 14

8/27/2015
 LUCAS A. TURNER, P.E.
 FL PE # 58201
 TURNER ENGINEERING &
 CONSULTING, INC.
 (COA # 29779)
 1239 JABARA AVE.
 NORTH PORT, FL 34288

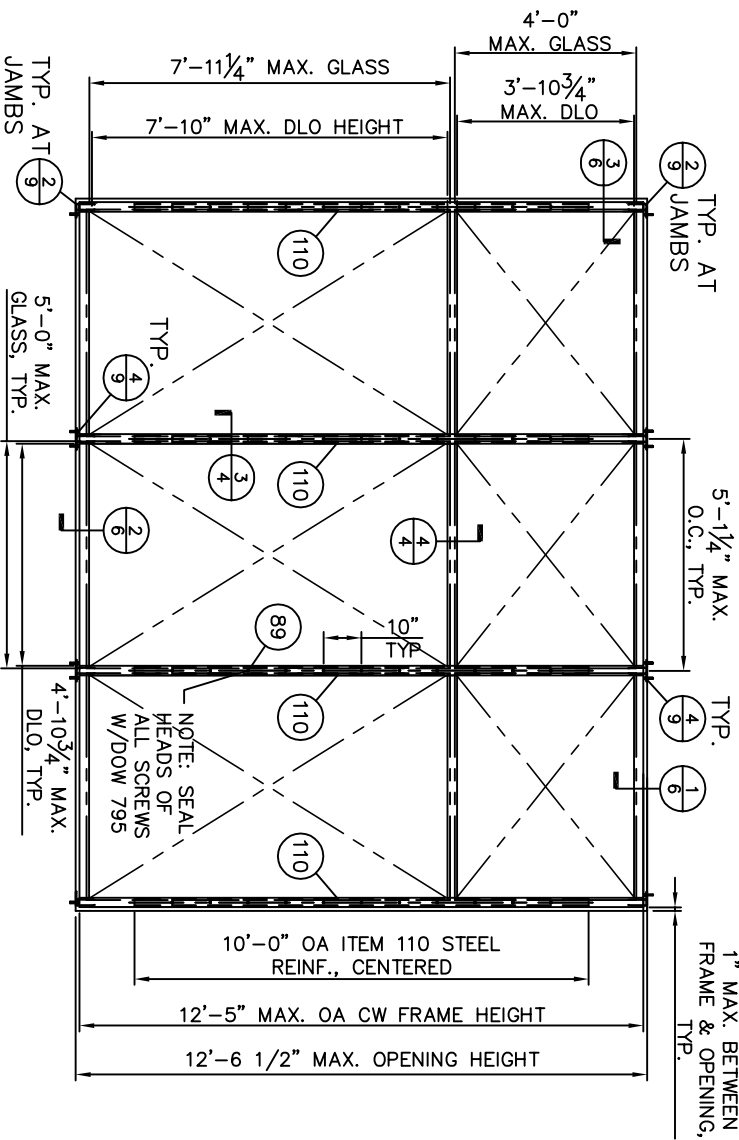
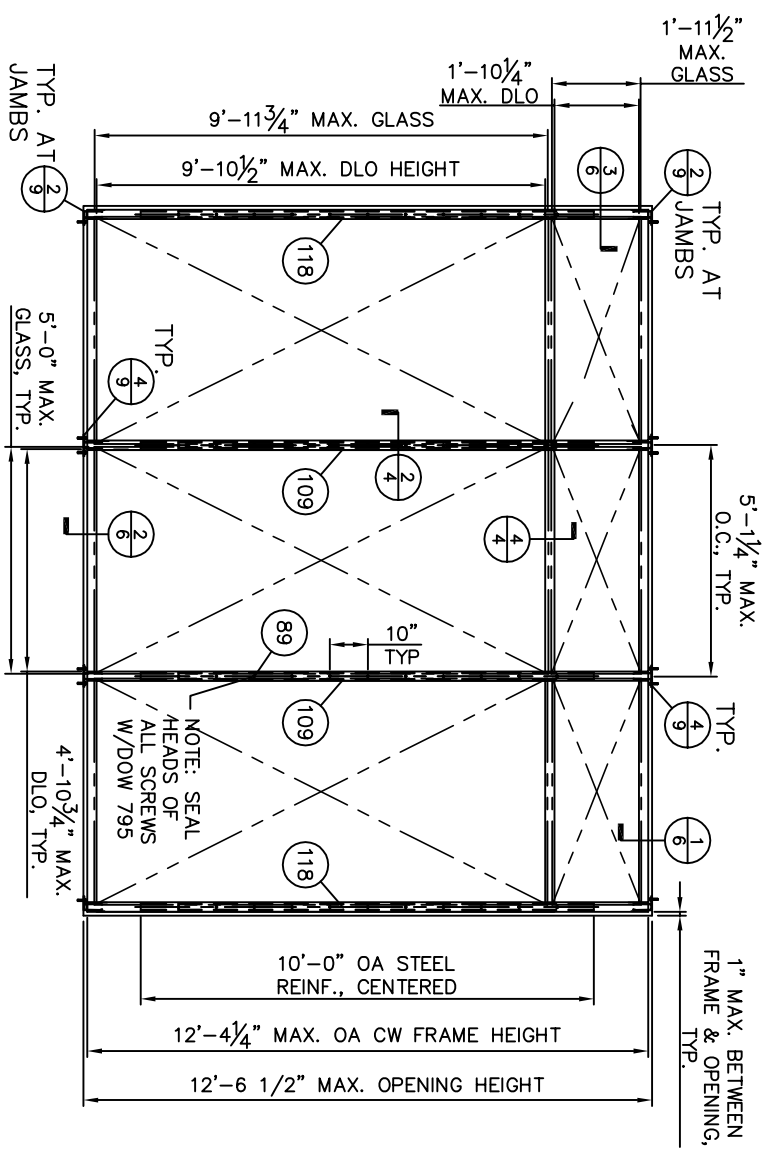
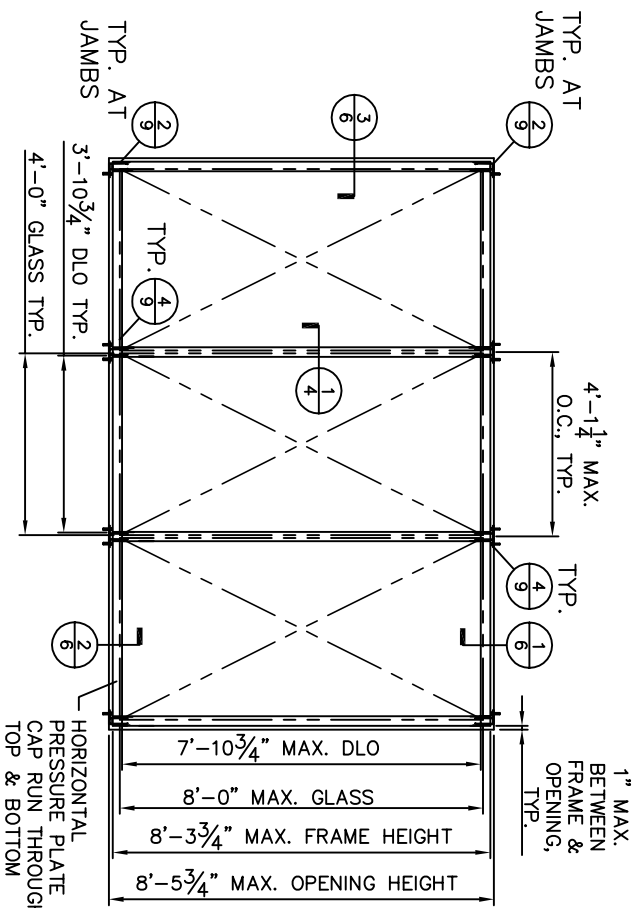


TABLE F. QUALIFIED GLAZING TYPES

TYPE	DESCRIPTION
ALL	1 5/16" THK. INSULATED LAMI. GLASS CONSISTING OF: -1/4" CLEAR, TEMPERED -1/2" AIRSPACE -1/4" CLEAR, HEAT STRENGTHENED -INTERLAYER AS SHOWN BELOW BY TYPE -1/4" CLEAR, HEAT STRENGTHENED
1	LARGE MISSILE INTERLAYER -0.090 KURARAY (DUPONT) SENTRY GLAS
2	LARGE MISSILE INTERLAYER -0.075 EASTMAN SAFLEX CP (VS02)
3	LARGE MISSILE INTERLAYER -0.090 KURARAY (DUPONT) BUTACITE PVB
4	SMALL MISSILE INTERLAYER -0.060 KURARAY (DUPONT) BUTACITE PVB

TABLE B. ELEV. E2/2 INFORMATION	
DESIGN PRESSURE	+/-65 PSF
GLAZING TYPE	3
MISSILE RATING	LARGE MISSILE

TABLE C. ELEV. E3/2 INFORMATION	
DESIGN PRESSURE	+/-90 PSF
GLAZING TYPE	1
MISSILE RATING	LARGE MISSILE

TABLE D. ELEV. E4/2 INFORMATION	
DESIGN PRESSURE	+/-70 PSF
GLAZING TYPE	1
MISSILE RATING	LARGE MISSILE

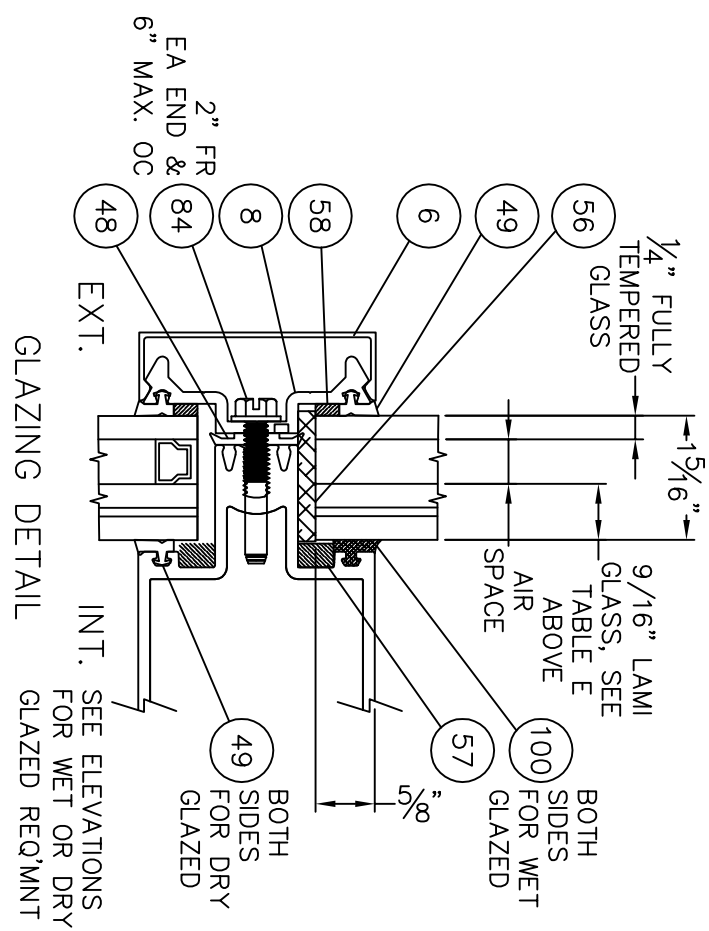


TABLE E. QUALIFIED ANCHOR INFORMATION

ID	SUBSTRATE	ANCHOR	MIN. EMBEDMENT	MIN. EDGE DISTANCE
A	SOLID UNCRACKED CONCRETE (3000 PSI MIN)	3/8" HILTI KWIK BOLT 3 CARBON OR STAINLESS STEEL, MAY BE USED ALL LOCATIONS EXCEPT DET. 1/9	2 1/2"	3"
B	SOLID UNCRACKED CONCRETE (3000 PSI MIN)	1/2" HILTI KWIK BOLT 3 CARBON OR STAINLESS STEEL, MAY BE USED ALL LOCATIONS, REQUIRED AT DETAIL 1/9 FOR CONCRETE INSTALL	2 1/4"	4 3/4"
C	SOUTHERN PINE WOOD (G=0.55 MIN)	1/2" GRADE 5 LAG SCREW	3"	2"
D	1/4" ALUM 6063-T5 MIN. OR 1/4" STEEL 36 KSI MIN.	3/8-16 GRADE 5 SHEET METAL SCREW	SEE NOTE	3/4"

NOTE: ANCHORS THROUGH METAL SHALL BE OF SUFFICIENT LENGTH TO PROVIDE THREAD ENGAGEMENT THROUGH THE FULL METAL THICKNESS

8/27/2015
LUCAS A. TURNER, P.E.
FL PE # 58201
TURNER ENGINEERING & CONSULTING, INC.
(COA # 29779)
1239 JABARA AVE.
NORTH PORT, FL 34288

SCALE: N.T.S.
REVISION: B

SHEET NAME: ELEVATIONS, ANCHORAGE, GLAZING

DATE: 05.07.14
DRAWING NUMBER: FPA-400-CAP-IMP
DRAWN: []
REV: []

REVISION HISTORY:
DESCRIPTION
ORIGINAL RELEASE
ANCHOR REVISIONS
ADDED LM TWIN

TUBELITE
DEPENDABLE
LEADERS IN ECO-EFFICIENT STOREFRONT, CURTAINWALL AND ENTRANCE SYSTEMS

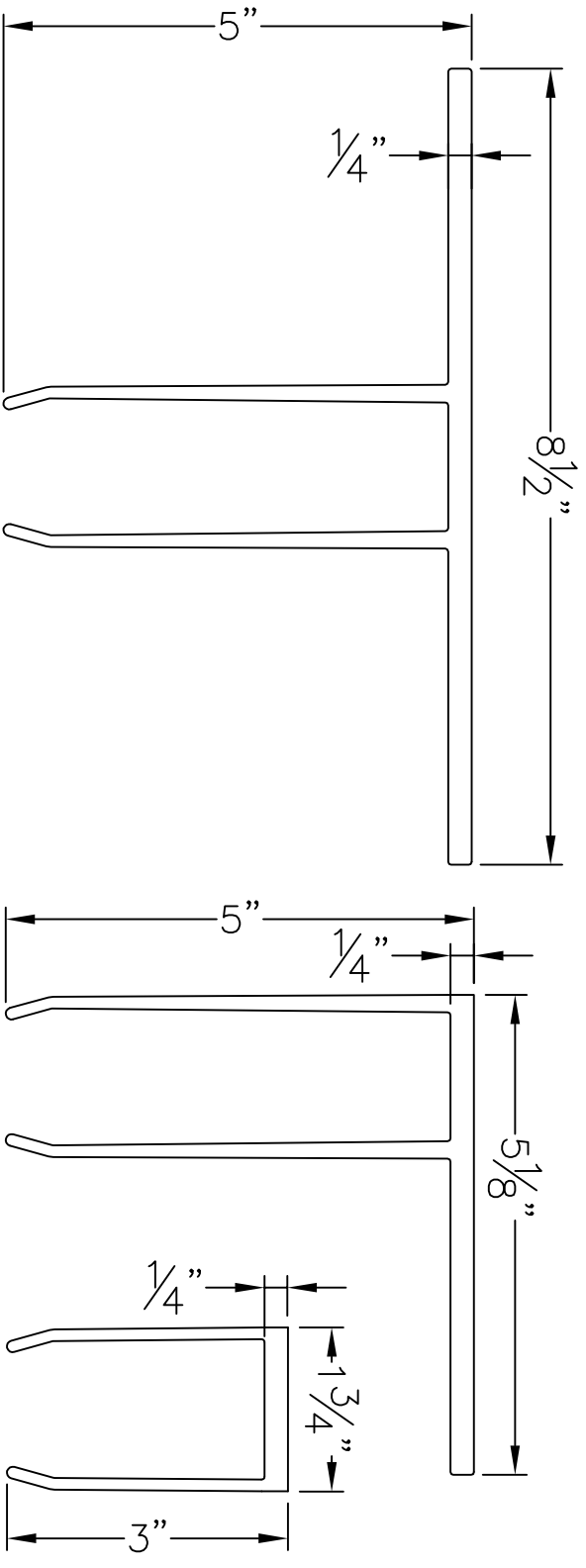
3056 WALKER RIDGE DRIVE N.W.
WALKER, MICHIGAN 49544
PH: 800.866.2227
FX: 616.301.0008
WEB SITE: WWW.TUBELITEINC.COM

TUBELITE
CW 400 CAPTURED IMPACT
CURTAIN WALL SYSTEM

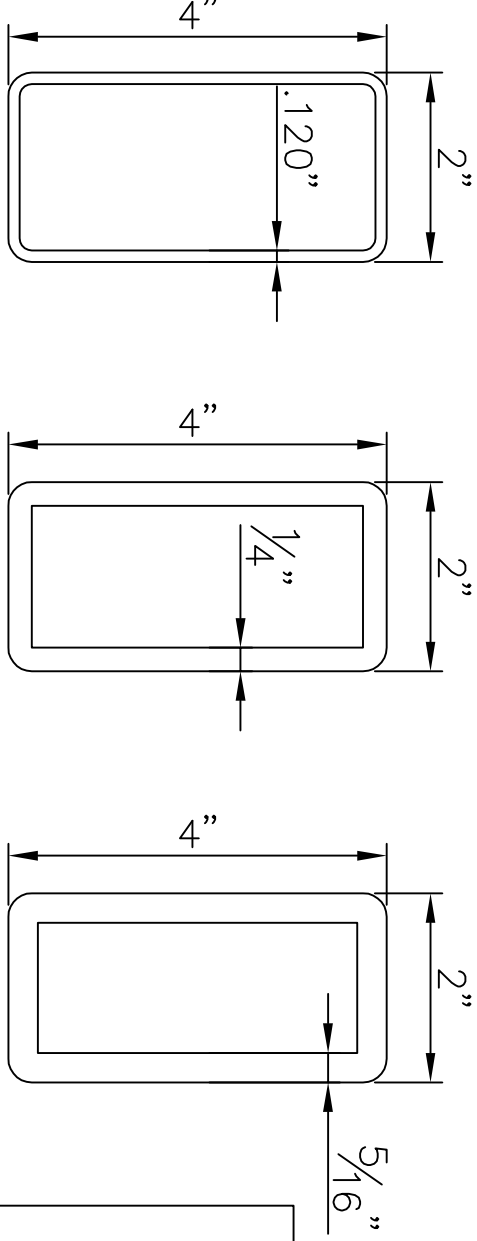
SHEET: 2 OF 14

ITEM	PART NUMBER	DESCRIPTION	MATERIAL
1	E51B02FS	EXTRUSION, TUBE, NON-THERMAL	ALUMINUM - 6063-T6
5	E51B110FS	EXTRUSION, OUTSIDE CAPTURED CORNER	ALUMINUM - 6063-T5
6	E41B64FS	EXTRUSION, COVER, FACE, 2-1/2 X 1/4	ALUMINUM - 6063-T5
8	M41B102FS	EXTRUSION, PRESSURE PLATE OFFSET (1 5/16")	ALUMINUM - 6063-T5
9	E51B250FS	EXTRUSION, OUTSIDE CORNER PRESS. PL (1 5/16")	ALUMINUM - 6063-T5
10	M51B251FS	EXTRUSION, FILLER-PRESSURE PLATE (1 5/16")	ALUMINUM - 6063-T5
13	E6642FS	EXTRUSION, GLAZING POCKET FILLER (1 5/16")	ALUMINUM - 6063-T5
16	E41B170FS	EXTRUSION, SCREW APPLIED HORN	ALUMINUM - 6063-T5
23	P1627D	MULL SPLICE FOR ITEM 1	ALUMINUM - 6063-T5
24	P1627J	MULL SPLICE FOR ITEM 3	ALUMINUM - 6063-T5
25	P1631	MULL SPLICE FILLER FOR ITEM 1	ALUMINUM - 6063-T5
26	P1628B	FACE COVER SPLICE SLEEVE	ALUMINUM - 6063-T5
27	P1B59F	SHEAR BLOCK	ALUMINUM - 6063-T5
28	P1B60F	SHEAR BLOCK	ALUMINUM - 6063-T5
29	P1B21A/B	ANCHOR, 'T' CUT & PRE-DRILLED. LG P/N A=4.761", B=5.053"	ALUMINUM - 6063-T6
30	P1B20A/B	ANCHOR, 'F' CUT & PRE-DRILLED. LG P/N A=4.761", B=5.053"	ALUMINUM - 6063-T6
31	P1B22	ANCHOR, 'U' CUT & PRE-DRILLED	ALUMINUM - 6063-T6
47	P1B42	WEEP BAFFLE	P-PART - FOAM
48	P1B94	GASKET, THERMAL BARRIER, EPG (PRESSURE PLATE)	P-PART - RUBBER
49	P1B28	GLAZING, FIXED, 1/2 THICK (CW)	P-PART - RUBBER
50	P1B75	GASKET, STRUCTURAL GLAZING	P-PART - RUBBER
51	P1B93	WATER DAM SINGLE POCKET	P-PART - RUBBER
53	P1B76A	WATER DAM 1"	P-PART - RUBBER
55	P1094	ROD, ETHAFOAM 3/4" DIA X 2" LONG	P-PART - FOAM
56	P6550	BLOCK, SETTING, 3/16" x 1 5/16" x 4" LG	P-PART - SILICONE
57	P6551	GLAZING TAPE 1/4 x 3/8 (THERMALBOND V2100 OR V2200)	P-PART - FOAM
58	P6552	GLAZING TAPE 1/8 x 1/4 (THERMALBOND V2100 OR V2200)	P-PART - FOAM
59	BY OTHERS	TWO FACE TAPE	P-PART - FOAM
61	TREMCO SGT 922	GLAZING TAPE 1/4 x 3/8	P-PART - FOAM
62	TREMCO SGT 922	GLAZING TAPE 1/8 x 1/4	P-PART - FOAM
75	BY OTHERS	BOLT, 3/4-10 X 5 1/4 HEX HEAD CLASS 2A	P-PART - FASTENER
76	BY OTHERS	3/4 FLAT WASHER	P-PART - FASTENER
77	BY OTHERS	3/4-10 HEX HEAD NYLOCK NUT	P-PART - FASTENER
78	S207	SCREW, 10-24 X 1 1/4 FLAT HEAD PHIL	P-PART - FASTENER
79	S328	SCREW, 1/4-20 X 1 HEX HEAD TYPE D (shear block)	P-PART - FASTENER
82	S270	SCREW, 10-24 X 3/4 PAN HEAD PHIL, SS (shear block)	P-PART - FASTENER
83	S6505	SCREW, 1/4-20 X 3/4 FLAT HEAD CLASS 2A (shear blk & mull splice)	P-PART - FASTENER
84	S359	SCREW, 1/4-20 1-1/2 HEX HD TYPE F (gess plate)	P-PART - FASTENER
85	S191	SCREW, 10-24 X 1/2 TRUSS HEAD PHIL (horiz mull & dr stop)	P-PART - FASTENER
86	S139	SCREW, 1/4-20 X 1/2 HEX HEAD TYPE B (shear blk & subframe no shim)	P-PART - FASTENER
87	S369	SCREW, 1/4-20 3/4 HEX HD TYPE CA (gess plate & subframe w/ shim)	P-PART - FASTENER
88	S131	SCREW, 8-32 5/16 FLAT HEAD PHIL (look face plate)	P-PART - FASTENER
89	S155	SCREW, 1/4-20 X 3" FLAT HEAD PHIL (reinforcing steel)	P-PART - FASTENER
90	S6509	SCREW, 6-32 X 1-1/4 FLAT HEAD CLASS 2A (shear blk & mull splice)	P-PART - FASTENER
91	BY OTHERS	INSTALLATION ANCHORS AND WASHERS, SEE TABLE E, SHEET 2	
96	S211	SCREW, 1/4-20 X 2 1/4 PAN HEAD PHIL, SS	P-PART - FASTENER

ITEM	PART NUMBER	DESCRIPTION	MATERIAL
99	BY OTHERS	DOW 795 SILICONE BUILDING SEALANT	
100	BY OTHERS	DOW 995 SILICONE SEALANT BLACK - STRUCTURAL GLAZING	
101	BY OTHERS	3/4 Ø BACKER ROD - STRUCTURAL GLAZING	
102	BY OTHERS	1 1/4 Ø BACKER ROD - STRUCTURAL GLAZING	
108	P6600	TUBE, 2"x4"x11 GA (120) WALL (120" LG)	A36 STEEL
109	P6601	TUBE, 2"x4"x1/4" WALL (120" LG)	A36 STEEL
110	P6602	TUBE, 2"x4"x5/16" WALL (120" LG)	A36 STEEL
111	P6603	ANGLE 6"x4"x3/8"	A36 STEEL
112	P6604	FORMED ANGLE 7"x4"x3/8"	A36 STEEL
113	P6605	PLATE 3 1/2"x3 1/2"	A36 STEEL
115	P6606	CHANNEL C4x5.4 (84" LG)	A36 STEEL
116	P6607	CHANNEL C4x5.4 (198" LG)	A36 STEEL
117	P6608	CHANNEL C4x5.4 (24" LG)	A36 STEEL
118	P6609	CHANNEL C4x5.4 (120" LG)	A36 STEEL



ITEM 29 - PTB21 T ANCHOR
 ITEM 30 - PTB20 F ANCHOR
 ITEM 31 - PTB22 U ANCHOR



ITEM 108 P6600 2" X 4" x .120 A36 STEEL TUBE
 ITEM 109 P6601 2" X 4" x 1/4" A36 STEEL TUBE
 ITEM 110 P6602 2" X 4" x 5/16" A36 STEEL TUBE

8/27/2015
 LUCAS A. TURNER, P.E.
 FL PE # 58201
 TURNER ENGINEERING & CONSULTING, INC.
 (COA # 29779)
 1239 JABARA AVE.
 NORTH PORT, FL 34288

REV	DATE	DRAWN	DESCRIPTION
0	5.7.14	LT	ORIGINAL RELEASE
A	2.24.15	LT	ANCHOR REVISIONS
B	8.27.15	LT	ADDED LM TWIN

DATE: 05.07.14
 DRAWING NUMBER: FPA-400-CAP-IMP
 DRAWN: [blank]
 FINAL REVIEW: [blank]
 SCALE: N.T.S.
 REVISION: B
 SHEET NAME: BOM, PART DWGS
 SHEET: 14 OF 14

TUBELITE
 Dependable
 LEADERS IN ECO-EFFICIENT STOREFRONT, CURTAINWALL AND ENTRANCE SYSTEMS

3056 WALKER RIDGE DRIVE N.W.
 WALKER, MICHIGAN 49544
 PH: 800.866.2227
 FX: 616.301.0008
 WEB SITE: WWW.TUBELITEINC.COM

TUBELITE
CW 400 CAPTURED IMPACT
CURTAIN WALL SYSTEM