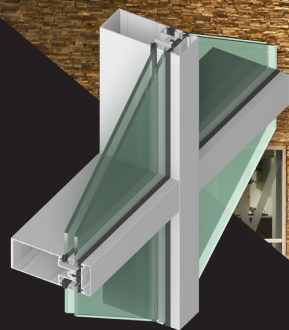
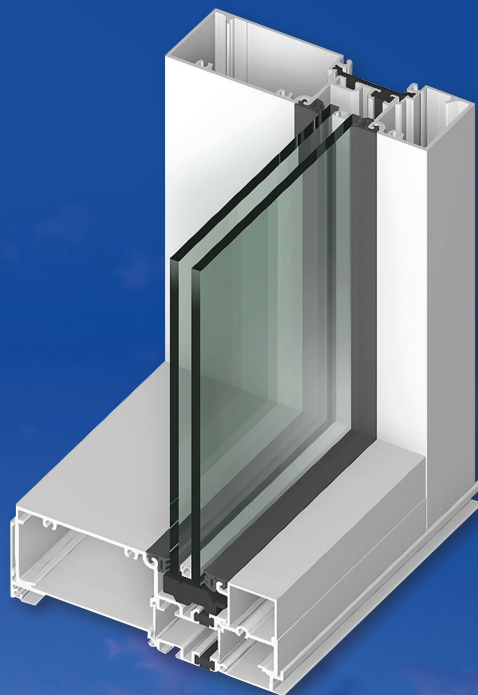


T24650

A New Look For A Timeless Design

T24650 Series Storefront Framing has the same design, assembly and accessories as the 14000 center glazed system's 2" face, but with a 6-1/2" depth. This additional 2" depth on the interior side of the frame provides greater structural properties and allows taller first floor openings. The wider profile also cuts a distinctive image for a storefront that stands out from the crowd.

- 2" x 6-1/2"
- Non-thermal, Thermal, and Ultra Thermal options
- Glass plane: Outside
- 1" standard infill (1/4" to 1-1/8")
- Integrates with: all Entrances, 3700 Insert Vents, and Sun Control



**400T Thermal
Curtainwall**



**Standard Wide
Stile Entrance**

**ALSO
USED
WITH**

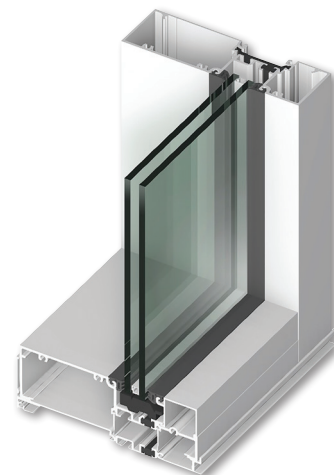
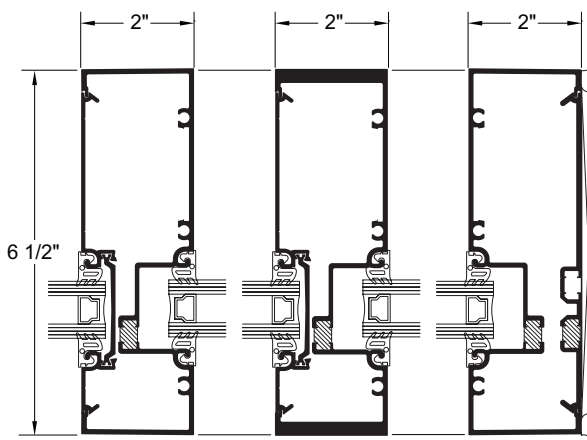
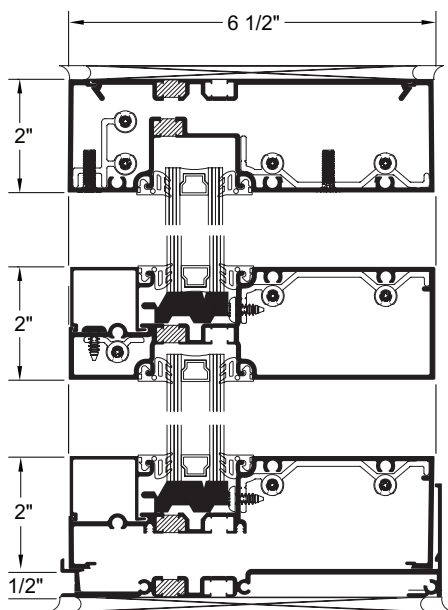
Navajo Tribal Utility Authority (NTUA) Headquarters
Photographer: Patrick Coulie Photography Inc

TUBELITE®
DEPENDABLE

LEADERS IN ECO-EFFICIENT STOREFRONT,
CURTAINWALL AND ENTRANCE SYSTEMS

T24650

A New Look For A Timeless Design



System Features:

- T24650 Thermal Storefront is recommended for use on taller ground floor applications and can span openings up to 14 feet high without steel reinforcing. Framing has 1/2" bite for use with glass or panels up to 1" thick. Verticals can also be steel-reinforced for higher performance in strong wind load areas.
- This system has a single pour and de-bridge thermal pocket, but is also available as the TU24650 dual pour and de-bridge high-performance thermal system, or as E24650 non-thermal framing.
- Members can be assembled using screw spline or clip joinery, and framing is compatible with Tubelite's Medium and Wide Stile Thermal=Block™ Doors.
- Our T24650 Series Storefront products are subjected to thorough testing by an independent laboratory, ensuring that you get the highest quality storefront framing products that the industry has to offer.

Performance Test Standards

Air Performance	ASTM E 283
Water Performance	AAMA 501 and ASTM E 331
Structural	ASTM E 330
Thermal	AAMA 1503
Thermal Break	AAMA 505 and AAMA TIR-A8
Acoustical	AAMA 1801 and ASTM E 1425

T24650 Series Product Specifications

Application: Low to mid-rise commercial buildings including retail, office, healthcare, schools, etc.

Description: 2" x 6-1/2" single P&D, outside or inside flush glazed storefront, front set glass.

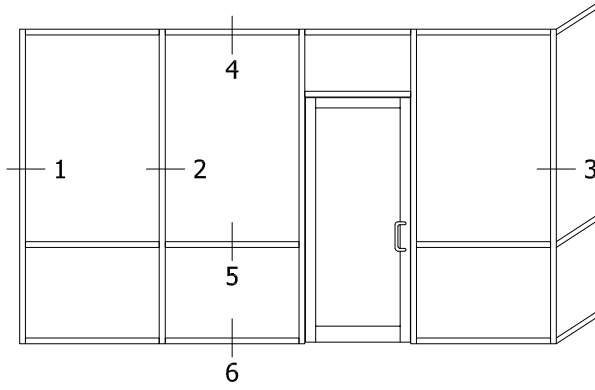
Face Width:	Overall Depths:	Glass Thickness:	Air Infiltration:	Water Infiltration:	Structural:	CRF:	U-Factor**:	Acoustic
2"	6-1/2"	1"	0.06 CFM/Ft.2 @ 6.24 PSF	12 PSF – Static 12 PSF – Dynamic	30 PSF – Design 45 PSF – Overload	72 _f / 72 _g	0.35 - Thermally Broken	31 STC 25 OITC

** U-Factor per NFRC 100: COG = 0.24 with warm edge spacer, 1-3/4" x 4-1/2" non-thermal frame.

Refer to the U-Factor table at: www.tubeliteinc.com/products/storefront/24650-series-storefront-framing/ for other glass makeups and configurations.

DISCLAIMER: Tubelite takes no responsibility for product selection or application, including, but not limited to, compliance with building codes, safety codes, laws, merchantability or fitness for a particular purpose; and further disclaims all liability for the use, in whole or in part, of this Technical Guide in preparation of project specifications and/or other documents. Technical Guides are subject to change at any time, without notice, and at Tubelite's sole discretion. ©2018 Tubelite Inc.

070120

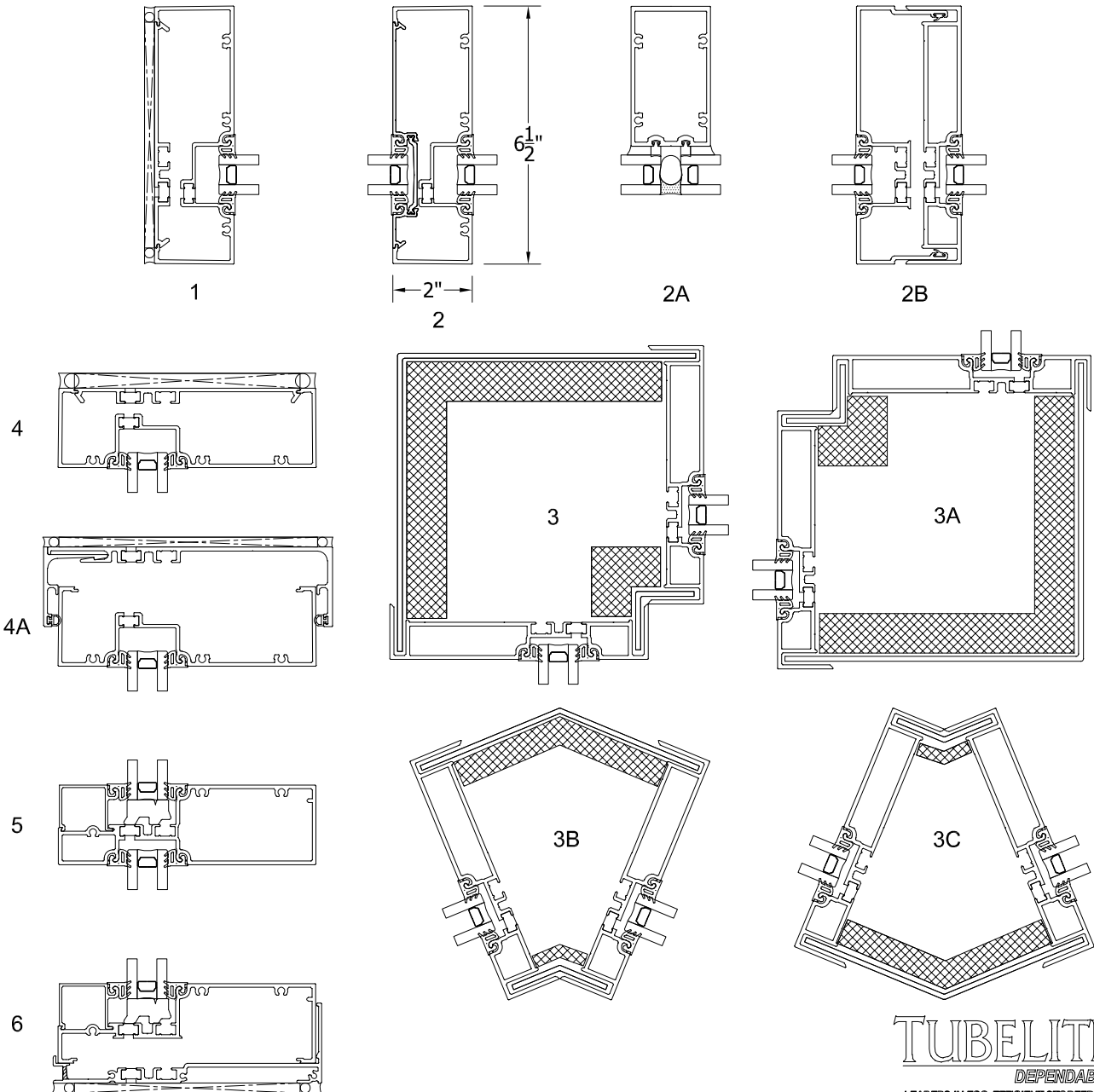


Tubelite reserves the right to change system configuration without prior notice when deemed necessary for product improvements.

Laws and building & safety codes governing the design and use of glazed entrance, window and curtain wall systems vary widely. Tubelite does not control the selection of product configurations, operating hardware or glazing materials, and assumes no responsibility thereof.

Standard Outside Glaze Details

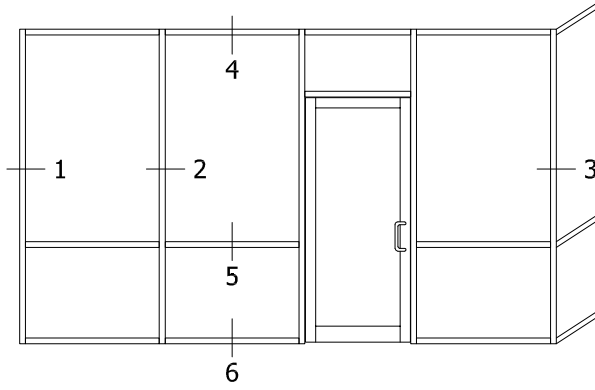
1/4 scale



June 2020

TUBELITE®
 DEPENDABLE
 LEADERS IN ECO-EFFICIENT STOREFRONT,
 CURTAINWALL AND ENTRANCE SYSTEMS

For specific product applications, contact your Tubelite representative.
 Details on this page represent standard details found on our website.
 For more options, visit our website at www.tubeliteinc.com/t24650-e24650-series-storefront-framing/

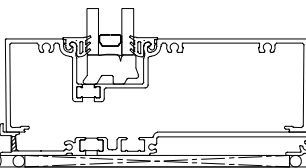
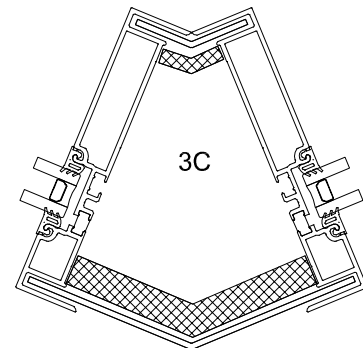
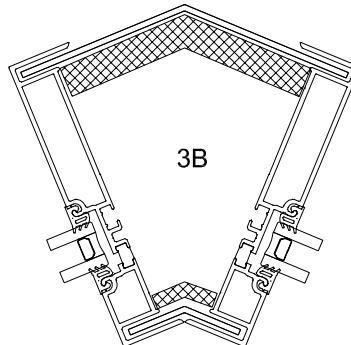
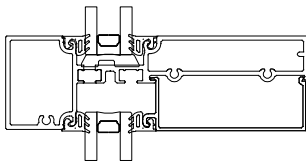
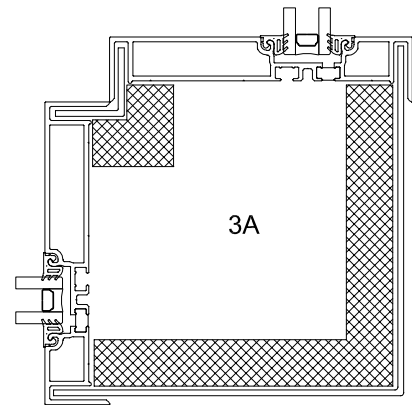
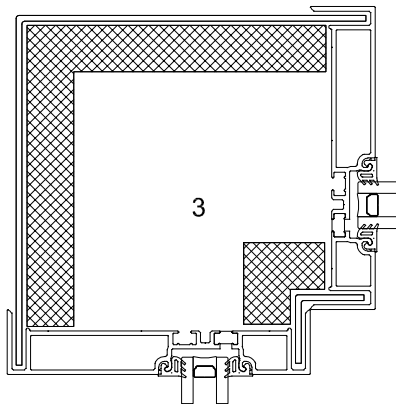
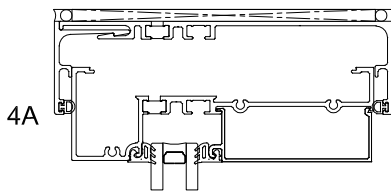
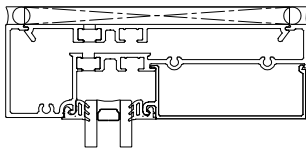
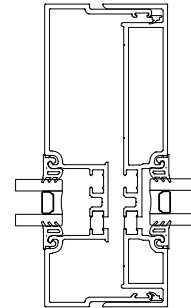
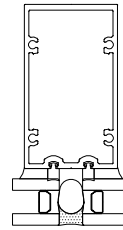
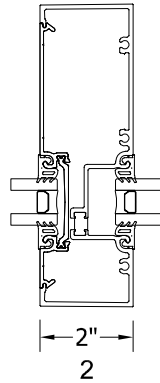
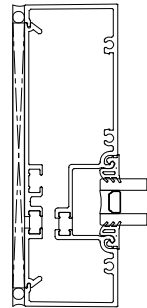


Tubelite reserves the right to change system configuration without prior notice when deemed necessary for product improvements.

Laws and building & safety codes governing the design and use of glazed entrance, window and curtain wall systems vary widely. Tubelite does not control the selection of product configurations, operating hardware or glazing materials, and assumes no responsibility thereof.

Standard Inside Glaze Details

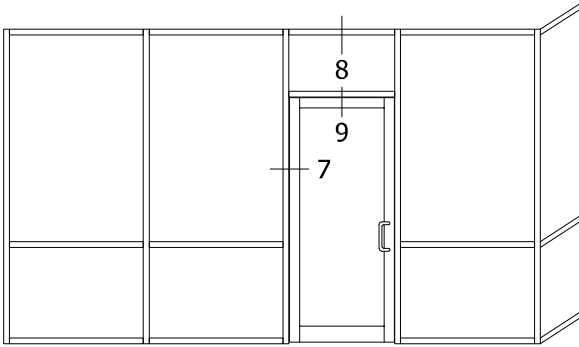
1/4 scale



TUBELITE®
DEPENDABLE
LEADERS IN ECO-EFFICIENT STOREFRONT,
CURTAINWALL AND ENTRANCE SYSTEMS

June 2020

For specific product applications, contact your Tubelite representative.
Details on this page represent standard details found on our website.
For more options, visit our website at www.tubeliteinc.com/t24650-e24650-series-storefront-framing/

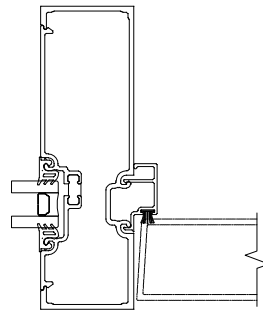


Tubelite reserves the right to change system configuration without prior notice when deemed necessary for product improvements.

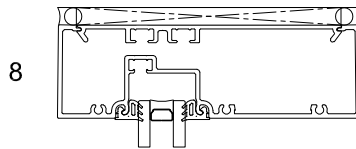
Laws and building & safety codes governing the design and use of glazed entrance, window and curtain wall systems vary widely. Tubelite does not control the selection of product configurations, operating hardware or glazing materials, and assumes no responsibility thereof.

Door Details

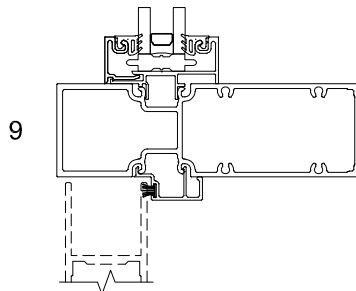
1/4 scale



7



8



9

June 2020

TUBELITE[®]
 DEPENDABLE
 LEADERS IN ECO-EFFICIENT STOREFRONT,
 CURTAINWALL AND ENTRANCE SYSTEMS

For specific product applications, contact your Tubelite representative.
 Details on this page represent standard details found on our website.
 For more options, visit our website at www.tubeliteinc.com/t24650-e24650-series-storefront-framing/